

walker

PIT & QUARRY ROUNDUP

Fall/Winter 2021

A newsletter for the
neighbours of Walker's
aggregate operations.

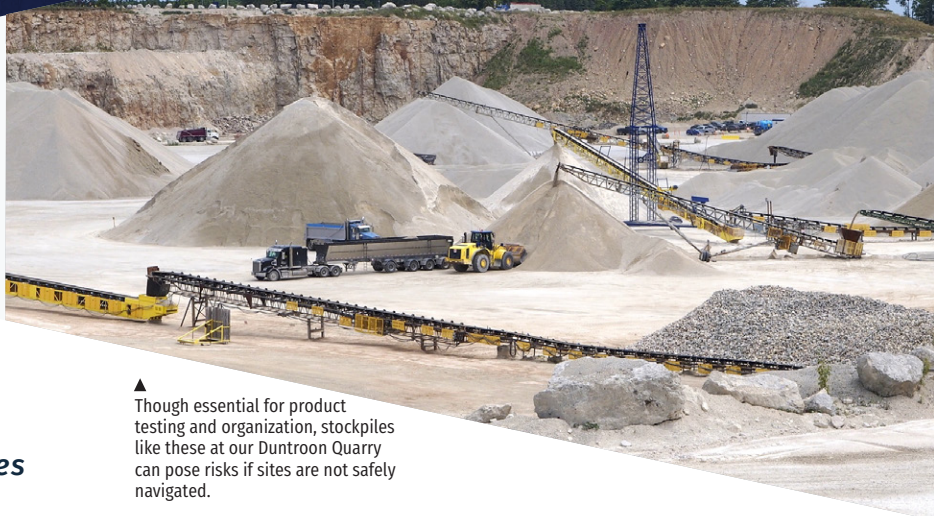
Stockpile Safety and Sustainability

*Why the stone you see in pits and quarries
isn't just your average pile of rocks.*

Walker is a leader in workplace safety and takes every measure to keep all employees and the communities we operate in safe. Aside from looking at safety around the processing plants, trucks, roads and operating floor, Walker identifies less typical areas where safety may be a concern, including product stockpiles.

Stockpiles can become quite tall and could pose a safety risk to employees should they ever collapse. While material stockpiles are essential at keeping materials organized for purchase and testing, it is even more important that they be managed in a safe and sustainable way to avoid unnecessary emissions and unnecessary risk to those around them.

There are many steps Walker takes to ensure that those working around stockpiles avoid unsafe practices. These include making sure the aggregate operation has enough space around the perimeter of the stockpile for walking and truck traffic, creating miniature stockpiles for the quality control team to extract samples safely without having to



▲ Though essential for product testing and organization, stockpiles like these at our Duntroon Quarry can pose risks if sites are not safely navigated.

worry about stone breaking loose, and providing the most up-to-date safety training for all employees.

Beyond organization, stockpiles can help reduce operation emissions, helping further improve Walker's sustainability objectives. So how does a stockpile end up helping the environment? It comes down to the equipment. At Walker, the aggregate operations have large programmable equipment which allows operators to create better blended stockpiles. When a stockpile is mixed well, operators can spend less time blending materials before they are loaded onto a truck. This results in more efficient fuel usage and ultimately an overall reduction in emissions.

Walker prides itself on being a leader in safety and sustainability — a pile of stone or sand can play a large part in those goals. With the best possible training and operating practices that support the safety culture, smart stockpiling is another way Walker is building a sustainable future, together.



Exciting Changes in Grey-Bruce with New Scale Houses and Signage

The processing plant has been moved from the east, to the west side of the operation at Sutherland Quarry and a new scale house has been added. Downs Pit and Shepherd Pit have also been equipped with new scale houses.

All Grey-Bruce sites have now been officially renamed Walker with new signage at each entrance.





▲ Rendering of the Amherstburg High School set to open September 2022.

Where the Stone Goes

Throughout the COVID-19 pandemic, Walker continued to provide aggregates to its valued customers, helping to support its communities.

In Essex, Walker supplied more than 21,000 tonnes of stone to the construction of a 21.5 km recreational trail in Chatham-Kent that circles a section of the Thames River. The quarry is also supplying approximately 25,000 tonnes of stone and an additional 520 triaxle loads of structural clay for the construction of the new Amherstburg High School.

In Niagara-on-the-Lake, Walker is currently supporting the Ministry of Transportation (MTO) by providing stone for the Glendale Avenue Interchange Reconstruction. The project will be completed by December 2023 and will be Ontario's first diverging diamond interchange.

Walker's Sutherland Quarry in Grey-Bruce has had a busy year with more than 24 completed shoreline projects which have involved excavators, operators, armour stone, and rip-rap stone. These projects include proper placement of large armour stone to build up the banks of various properties on Georgian Bay to prevent further erosion by wave action and winter ice damage.

In Simcoe, Severn Quarry provided over 100,000 tonnes of Granular A and Granular B stone for Barrie's Highway 400 and Anne Street Underpass project. The project forecasts completion by 2022.



▲ Ken Lucyshyn (pictured centre), Executive Vice President Aggregates & Construction presents donation to representatives from Bruce Peninsula Hospitals Foundation.

Supporting Long-Term Healthcare Needs in Grey-Bruce

Walker recently donated \$25,000 towards Bruce Peninsula Hospitals Foundation "Keeping Care Close to Home" Monthly Giving Program. The Foundation's usual fundraising initiatives are on hold due to COVID-19 restrictions. Developing a healthy monthly giving program will provide a reliable, long-term income stream to support the needs of the Wiarton & Lion's Head Hospitals.

Helping to Improve Ontario's Trout Habitat

Working alongside community partners, Walker's Grey-Bruce aggregate operations contributed machines, operators and donated boulders and spawning gravel to enhance the trout habitat areas in Desboro, Ontario. The trout habitat lies on land owned by Walker adjacent to Grant Pit.



Employees from Walker Brothers Quarry and Corporate Head Office in Niagara volunteered with local environmental groups to collect litter and waste in support of Ontario's Action on Litter program. In one day, over 90 volunteers collected more than 1,800 pounds of litter and garbage.

Walker Quarry Sites Focusing on Safer, Cleaner and More Efficient Methods

Learn what our operations across Ontario are doing to continuously improve.

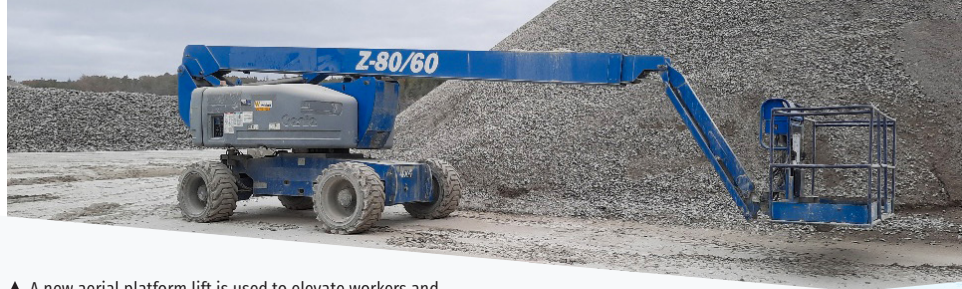
Niagara's Vineland Quarry and Simcoe's Duntroon Quarry both move to decrease fuel consumption by adding new haul trucks to their fleet. Duntroon's new 772 Caterpillar haul truck has the ability to move more material, improving efficiency and reducing emissions. The new Komatsu at Vineland will haul stone to the crusher with nearly 10% better fuel-efficiency than its predecessor. Additionally, the truck uses diesel exhaust fluids (DEF), which help improve emissions, making it a cleaner vehicle to operate.

The Vineland site has also found a more environmental way manage its pond. Hay bales have been utilized as dams to control water, as well as act as a filtration system to keep heavier silt from entering the water.

Walker Brothers Quarry added a new genset and pump, which dewater the operating face and supplies water for the water trucks for all of Walker's Niagara campus. This unique piece of equipment is entirely self-contained and spill-proof, which improves emissions and reduces noise to the surrounding environment.

The Orillia Pits recently added a new 8ft x 20ft wash deck to their operations. The wash deck helps clean dirt off the product coming on the line. This new larger wash deck will wash more product than its precursor, allowing the machine to run less frequently.

Safety continues to be a priority for all sites with Severn Quarry implementing a new aerial platform lift to elevate employees and tools. The lift provides more secure access to hard-to-reach areas, making working at heights a much safer and easier task for our employees.



▲ A new aerial platform lift is used to elevate workers and tools into safe working positions at Severn Quarry.



▼ New 772 Caterpillar Haul Truck at Duntroon moves more material, improving efficiency and emissions.



**Habitat
for Humanity®**
Niagara

250 tonnes
of stone from
Ridgemount Quarry
was donated for a
Habitat for Humanity
housing project in
Welland that broke
ground in early
October.

Windsor-Essex Quarries in the Community

The Amherstburg Fire Department and the Windsor Police Tactical Unit put buffer lands at Amherstburg Quarry to good use. The two groups conduct regular training sessions on the vacant property so they can be well prepared to serve the community.

More than 200 tonnes of stone from McGregor Quarry was donated to the Windsor-Essex Therapeutic Riding Association (WETRA) for driveway rehabilitation. WETRA was established in 1971 and provides a wide range of therapeutic programs including camp, group visits, therapeutic riding, and much more.



▼ WETRA driveway rehabilitation provides safe entrance to the facility.

Community Event Cancellations

Out of respect for the well-being of our employees and community, all winter neighbourhood events will be cancelled until further notice. We wish our neighbours safe and healthy holidays.

CONTACT NIAGARA

Walker Brothers Quarry & Asphalt | Niagara Falls, ON
Moe Collee | Quarry Superintendent
☎ 905-658-8304 ✉ mcollee@walkerind.com

Vineland Quarry & Asphalt | Lincoln, ON
Mike Deluca | Quarry Superintendent
☎ 289-257-1175 ✉ mdeluca@walkerind.com

Spring Creek Quarry | Lincoln, ON
Ron Konig | Quarry Superintendent
☎ 289-214-7625 ✉ ronkonig@walkerind.com

Ridgemount Quarry | Stevensville, ON
Pat Raso | Shop Foreman
☎ 289-213-2897 ✉ praso@walkerind.com

CONTACT SIMCOE

Duntroon Quarry | Duntroon, ON
Rick Laws | Quarry Superintendent
☎ 705-444-4604 ✉ rlaws@walkerind.com

Seyvern Quarry | Orillia, ON
Roger McGillvray | Quarry Superintendent
☎ 705-443-1183 ✉ rmcgillvray@walkerind.com

Edgar Pit | Oro Station, ON
Anten Mills Pit | Minesing, ON
Pit 5, Pit 7 | Oro-Medonte, ON
Pit 48 | Orillia, ON
Ryan Dosch | Sand & Gravel Superintendent
☎ 705-441-4391 ✉ rdosch@walkerind.com

CONTACT GREY-BRUCE

Head Office | Kemble, ON
☎ 519-376-5698

Downs Pit & Asphalt Plant | Owen Sound, ON
Holland Pit | Holland Centre, ON
Lindsay Quarry | Mar, ON
Redford Pit | Hanover, ON
Sutherland Quarry | Owen Sound, ON
Shepherd Pit | Desboro, ON
Robert Mantha | Aggregate Operations Manager
☎ 519-373-7242 ✉ rmantha@walkerind.com

Alvanley Ready Mix Concrete | Allenford, ON
Elmer Caceres Chicas | Quarries Manager - Grey-Bruce
☎ 519-379-8345 ✉ ecaceres@walkerind.com

CONTACT ESSEX

Amherstburg Quarry | Amherstburg, ON
McGregor Quarry | Amherstburg, ON
Bob Haroutunian | Operations Manager
☎ 519-736-2136 ✉ bharoutunian@walkerind.com



Building a sustainable
future, **together.**



Printed on paper containing
100% post-consumer fibre

www.walkeraggregates.com



▲ Georgie Walker (second from right) and members of the Niagara community stand on site at the future home of the Walker Sports and Abilities Centre.

Walker Makes a Lasting Impact with Donation to the Canada Games

In July, Walker Industries and the Walker family donated \$3 million to the 2022 Canada Games located in Niagara, ON. The facility has been named The Walker Sports and Abilities Centre and totals 210,000 square feet. The facility will include a sports performance centre, a health and well-being centre, a twin-pad arena, a 200-metre indoor walking and running track, sports offices, and a multipurpose fieldhouse with a parasport gymnasium. Additionally, six beach volleyball courts and a 400-metre international track and field facility will be located outside.

The donation from Walker will ensure the world-class sport facility will be available to all Niagara residents for decades after the games have ended.

Employee Spotlight

Name Rob Quaile

Works at Ridgemount Quarry

Hometown Ridgeway, ON

Family life Rob has a large, loving family of five daughters, one granddaughter, and three grandsons.

Years at Walker 2 months

What's his job? Loader Operator

Why Walker? Rob enjoys the fact that it is a larger company of more than 1,200 employees and still keeps its small company morals.

In his spare time Rob enjoys riding his motorcycle and sitting by the pool with family and friends.

Favourite thing about his community He enjoys knowing his neighbours in his small friendly town.



New Website for Walker Construction

The construction teams from Niagara and Grey-Bruce collaborated to create new content for the brand new construction website. The website features a product and service catalogue, case studies, convenient ways to contact the sales team, and much more. To learn more about Walker's construction projects and community involvement visit www.walkerconstruction.ca.



Ready to go digital?

If you want to stay in the loop but prefer to go paperless, visit our website or scan the QR code to sign up for our digital newsletter.

SCAN ME