

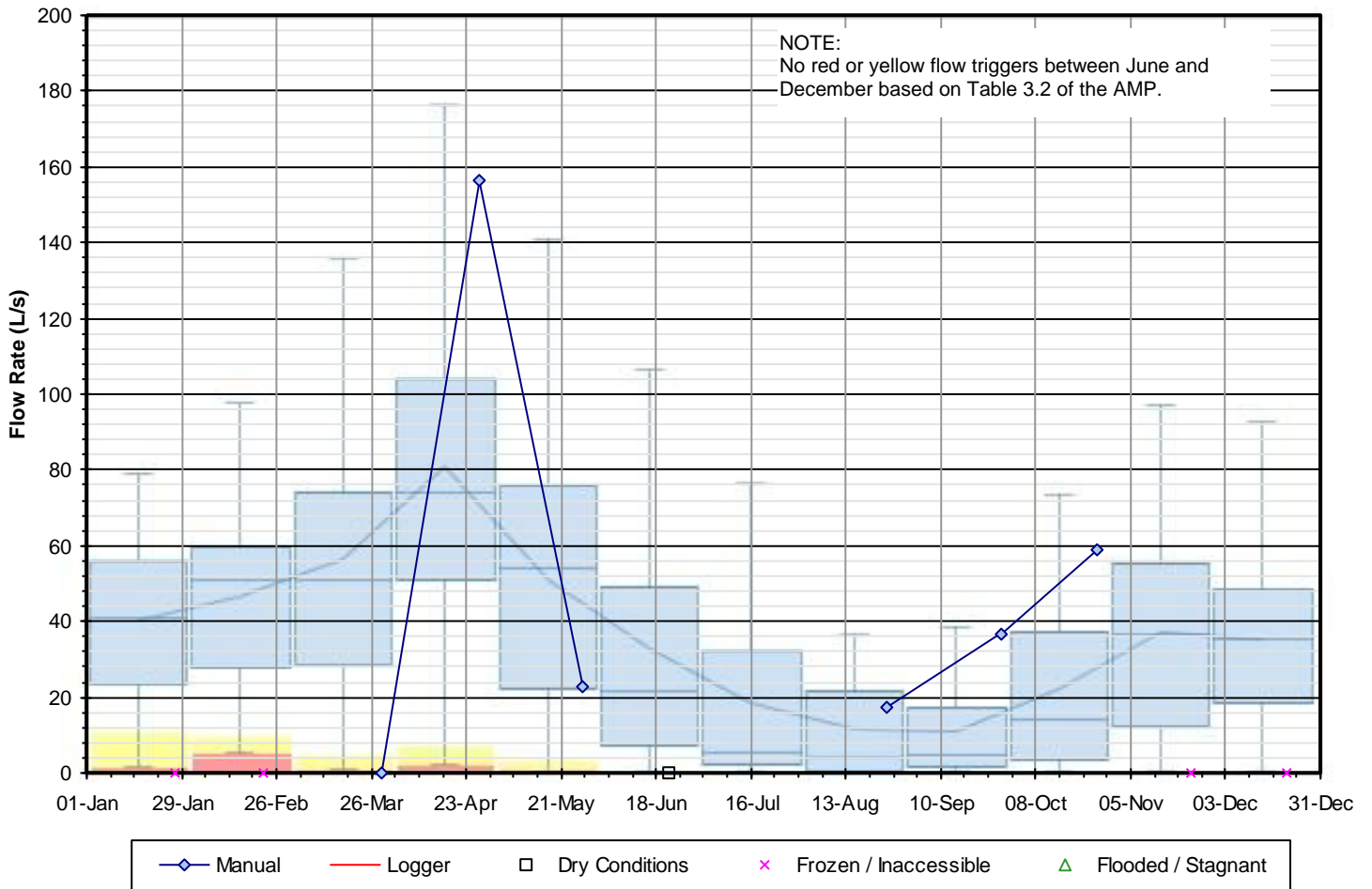
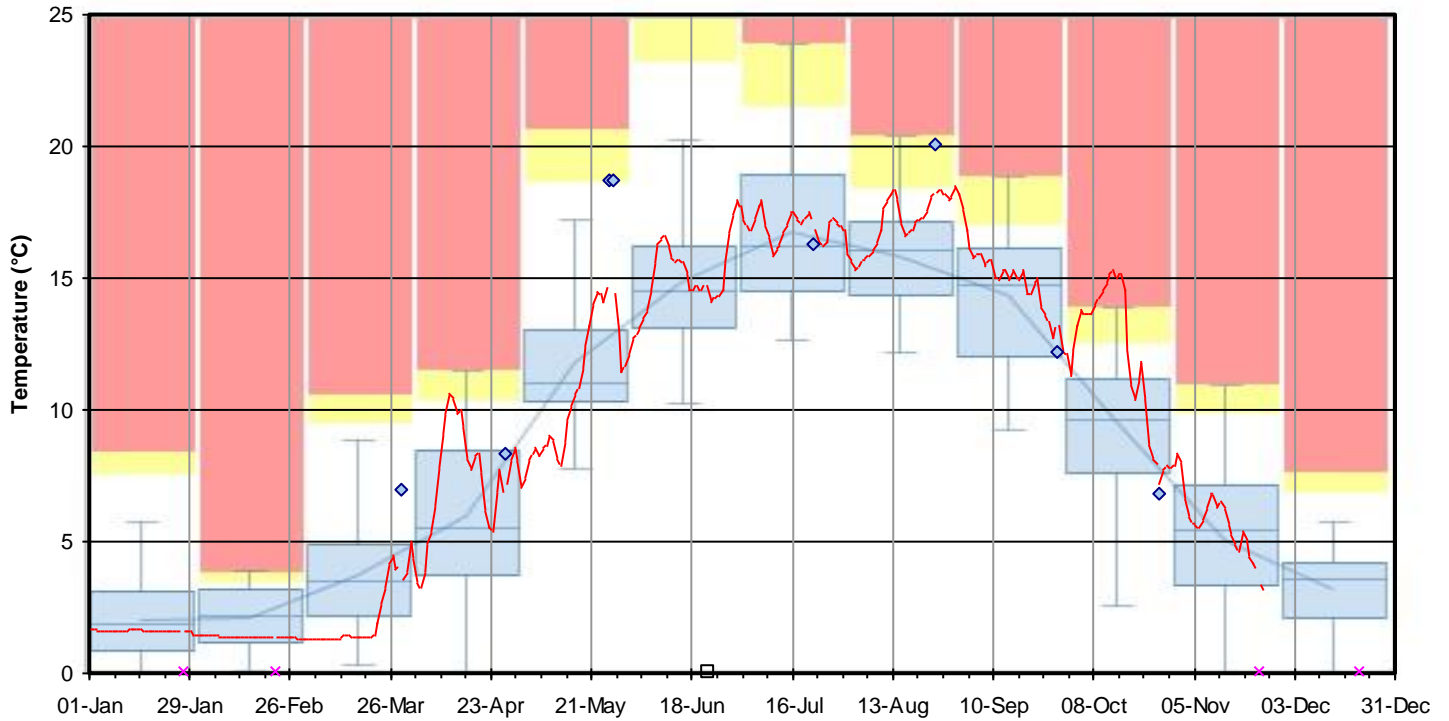
# APPENDIX

**F**

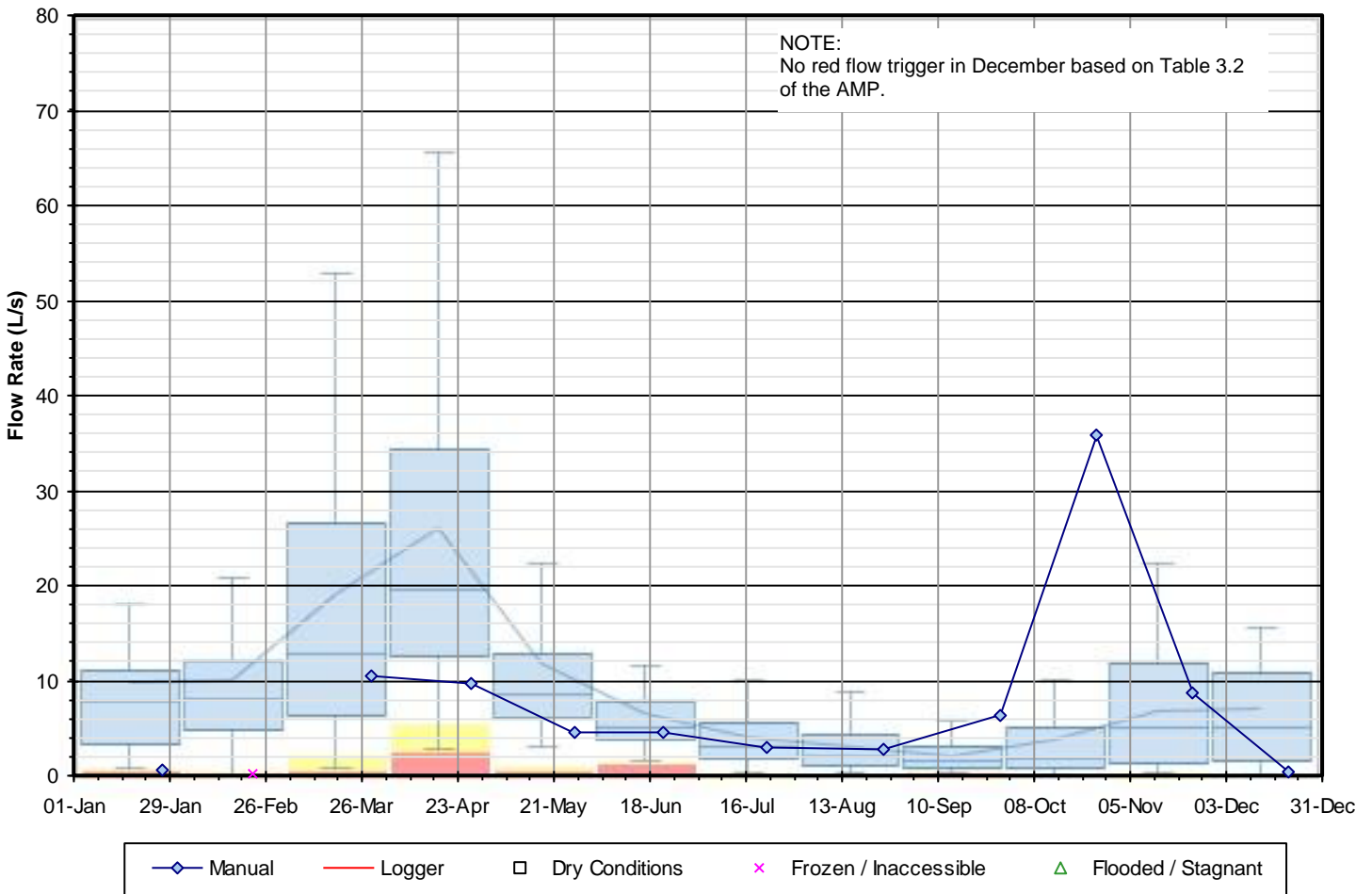
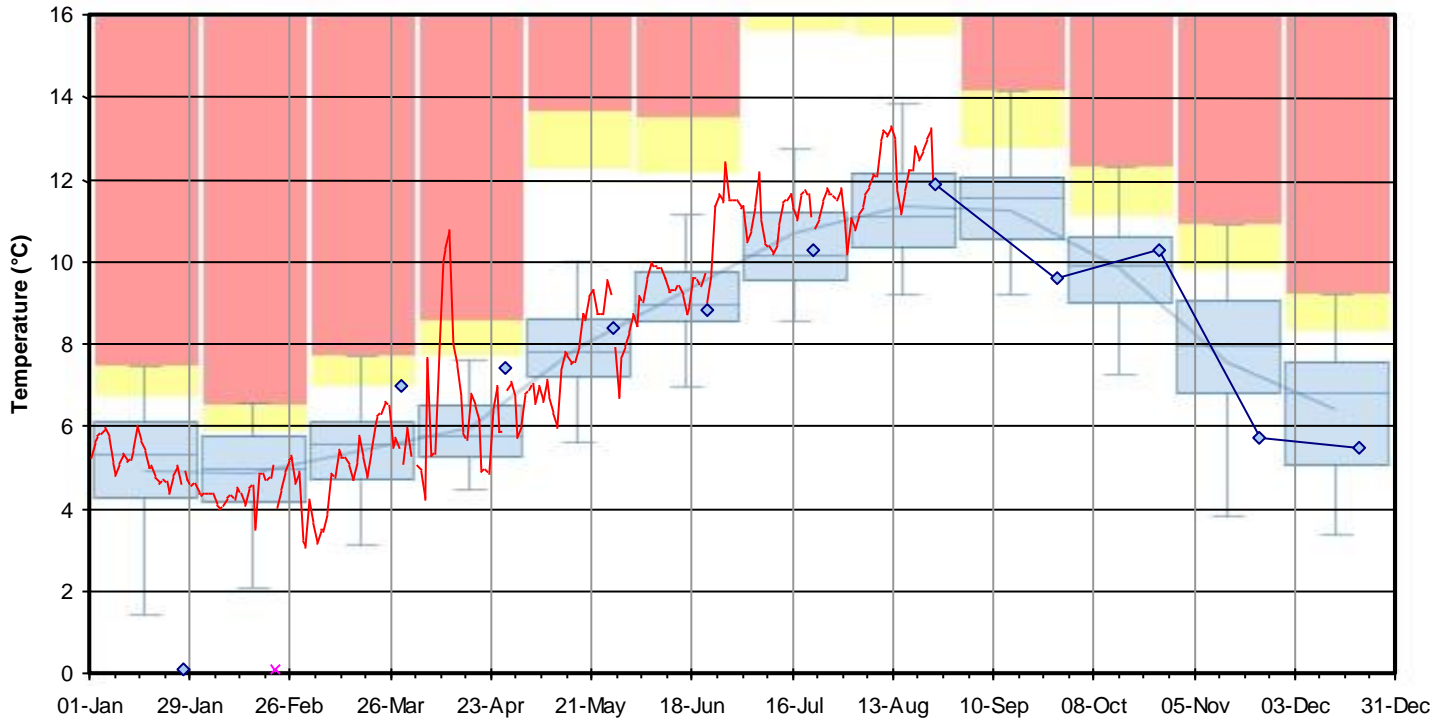
PERFORMANCE INDICATOR  
MONITORING PROGRAM  
(PITM) RESULTS

**Figure F-1 2021 Surface Water PITM Results**

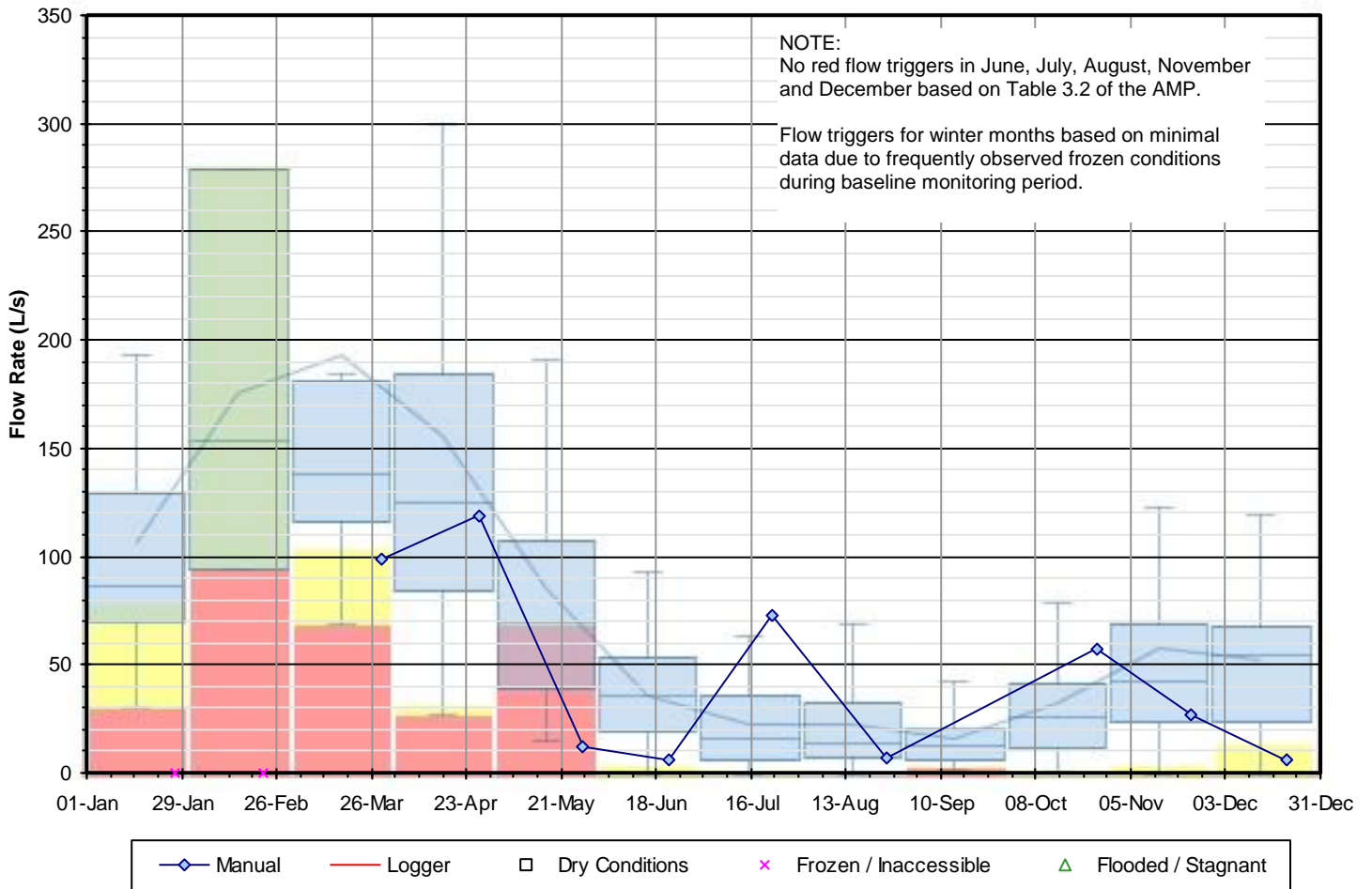
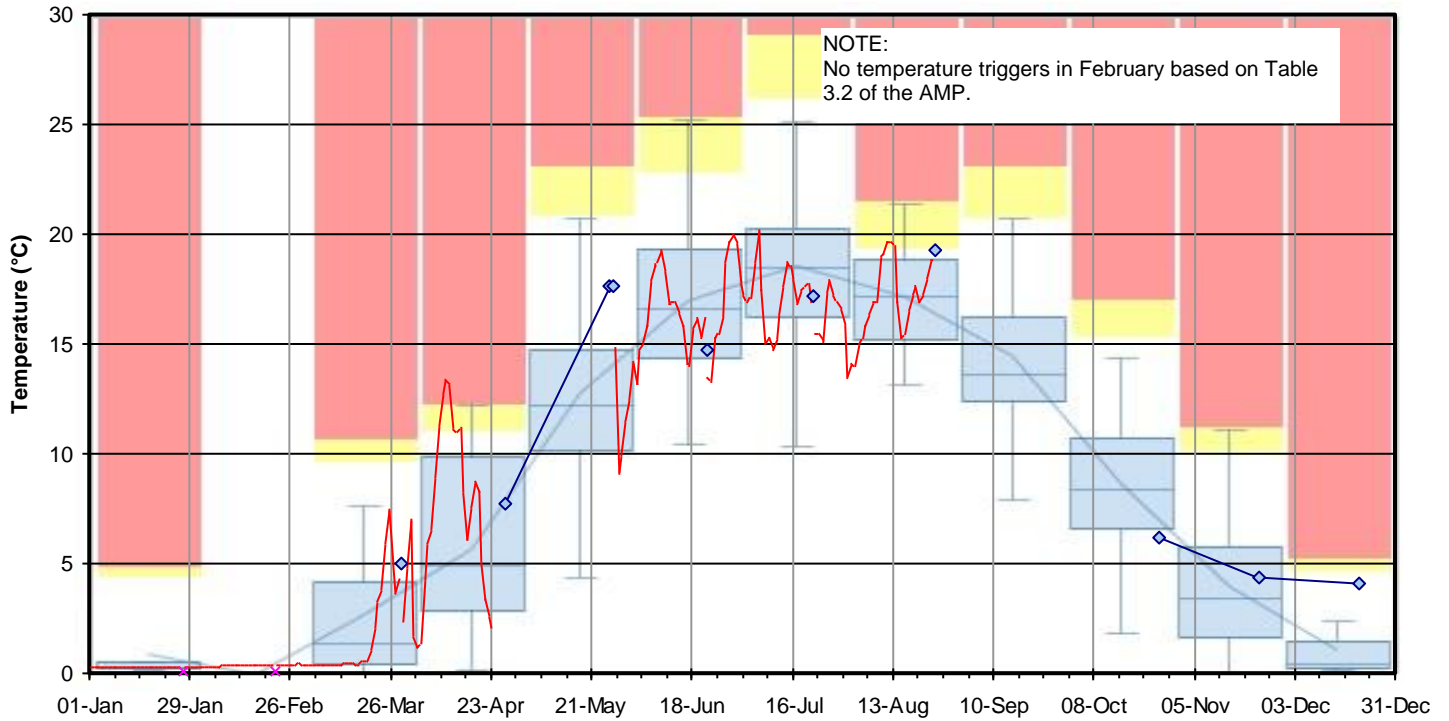
**SWI - Rob Roy Swamp 6 Quarry Discharge**



**Figure F-2 2021 Surface Water PITM Results**  
**SW2 - Rob Roy Swamp 6 Culvert south of County Rd 91**

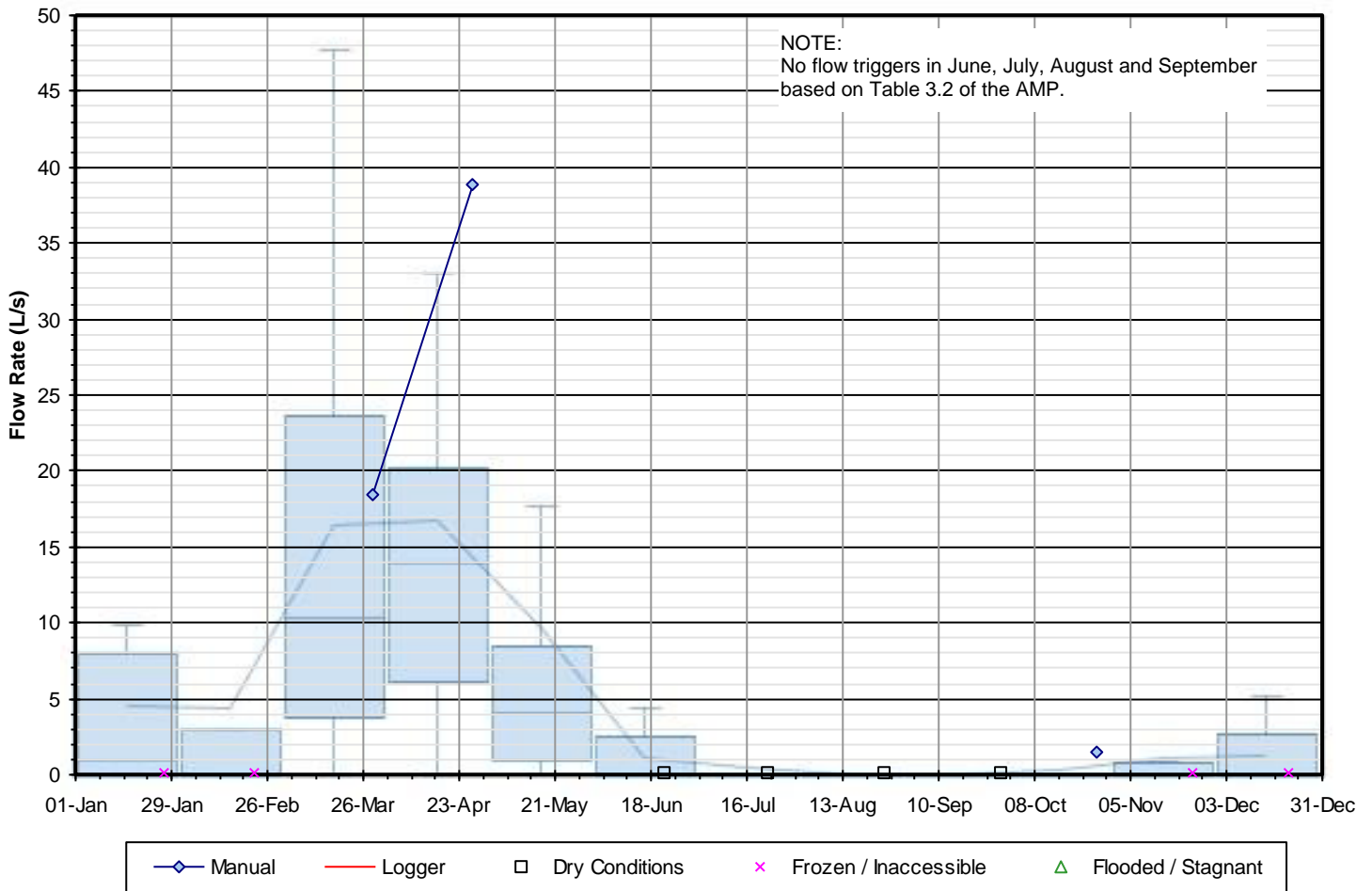
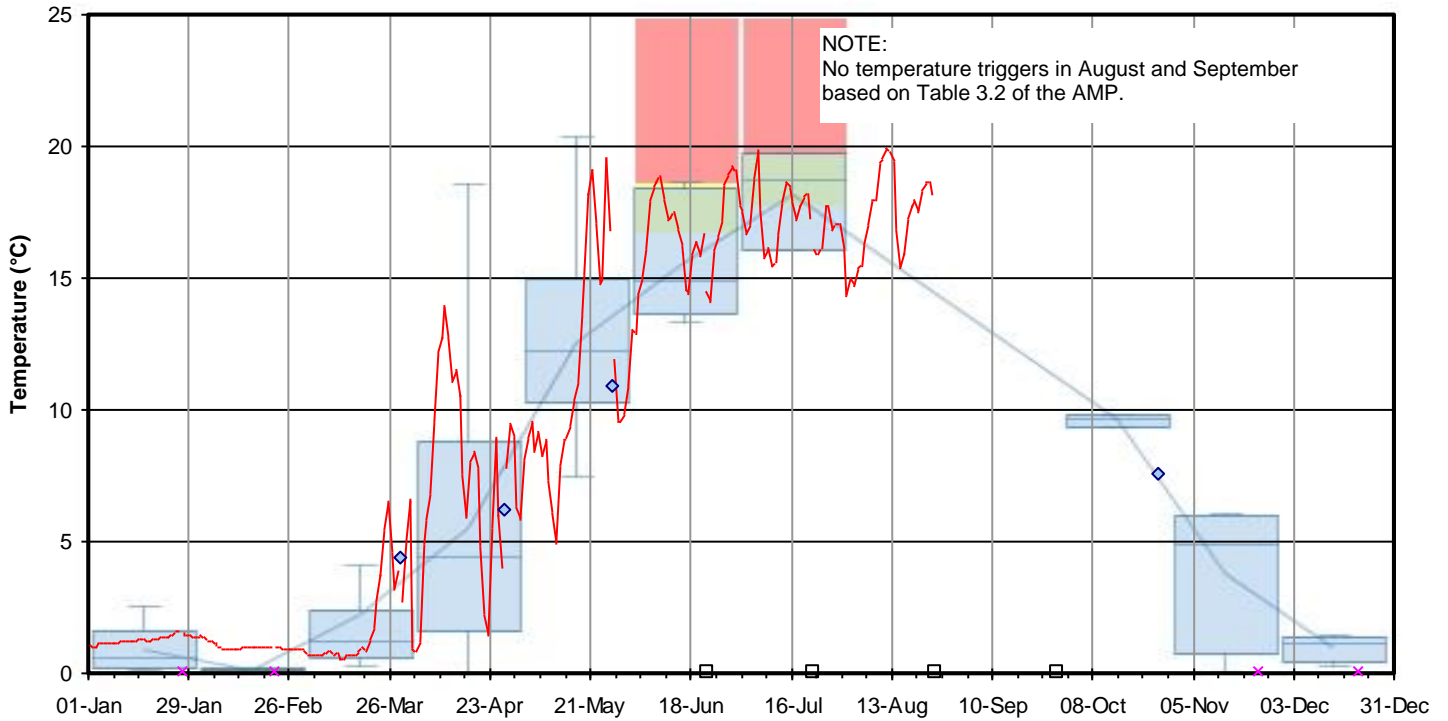


**Figure F-3 2021 Surface Water PITM Results**  
**SW0-2 - Rob Roy Swamp 6 Northwest Outlet**

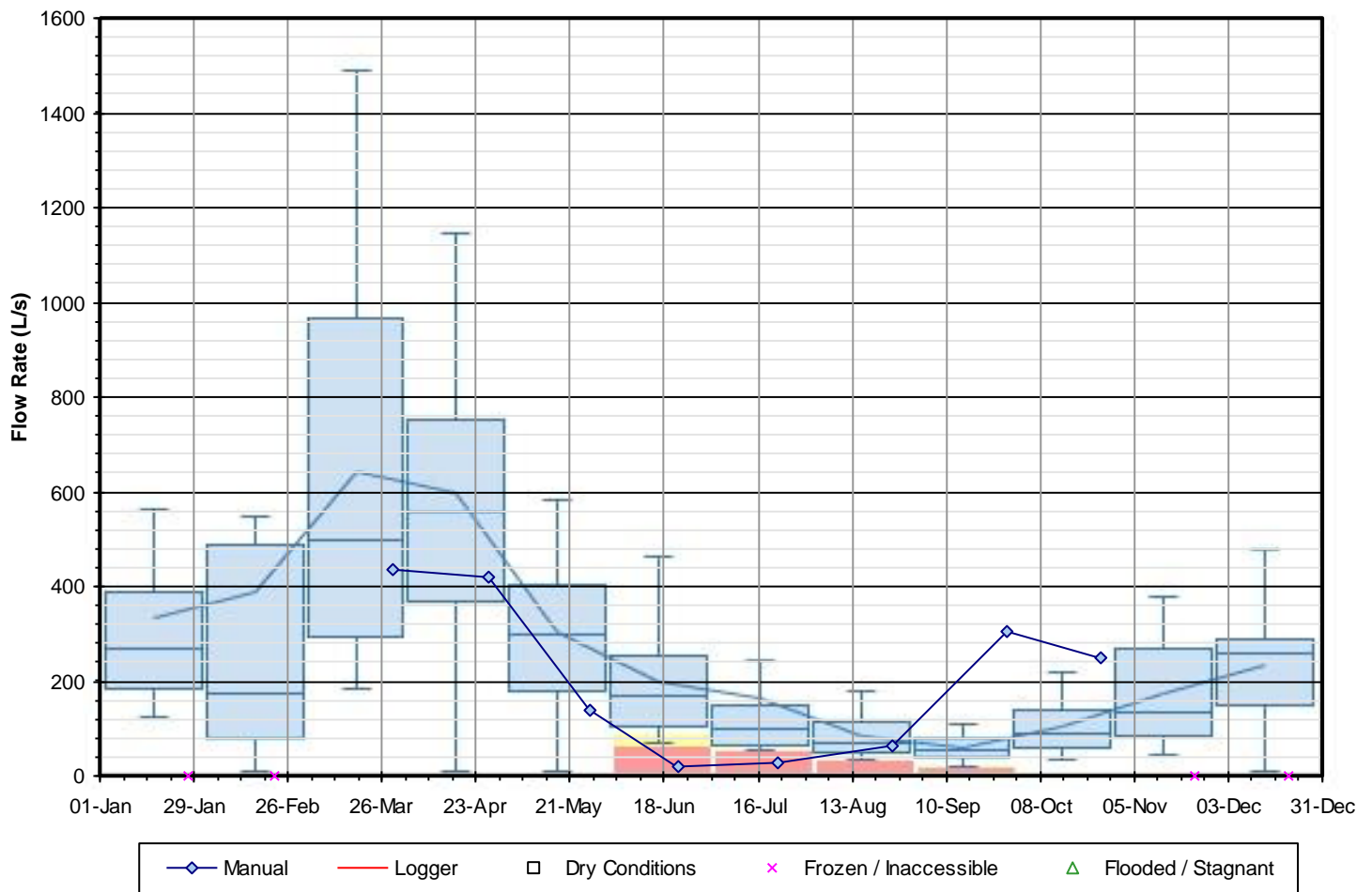


**Figure F-4 2021 Surface Water PITM Results**

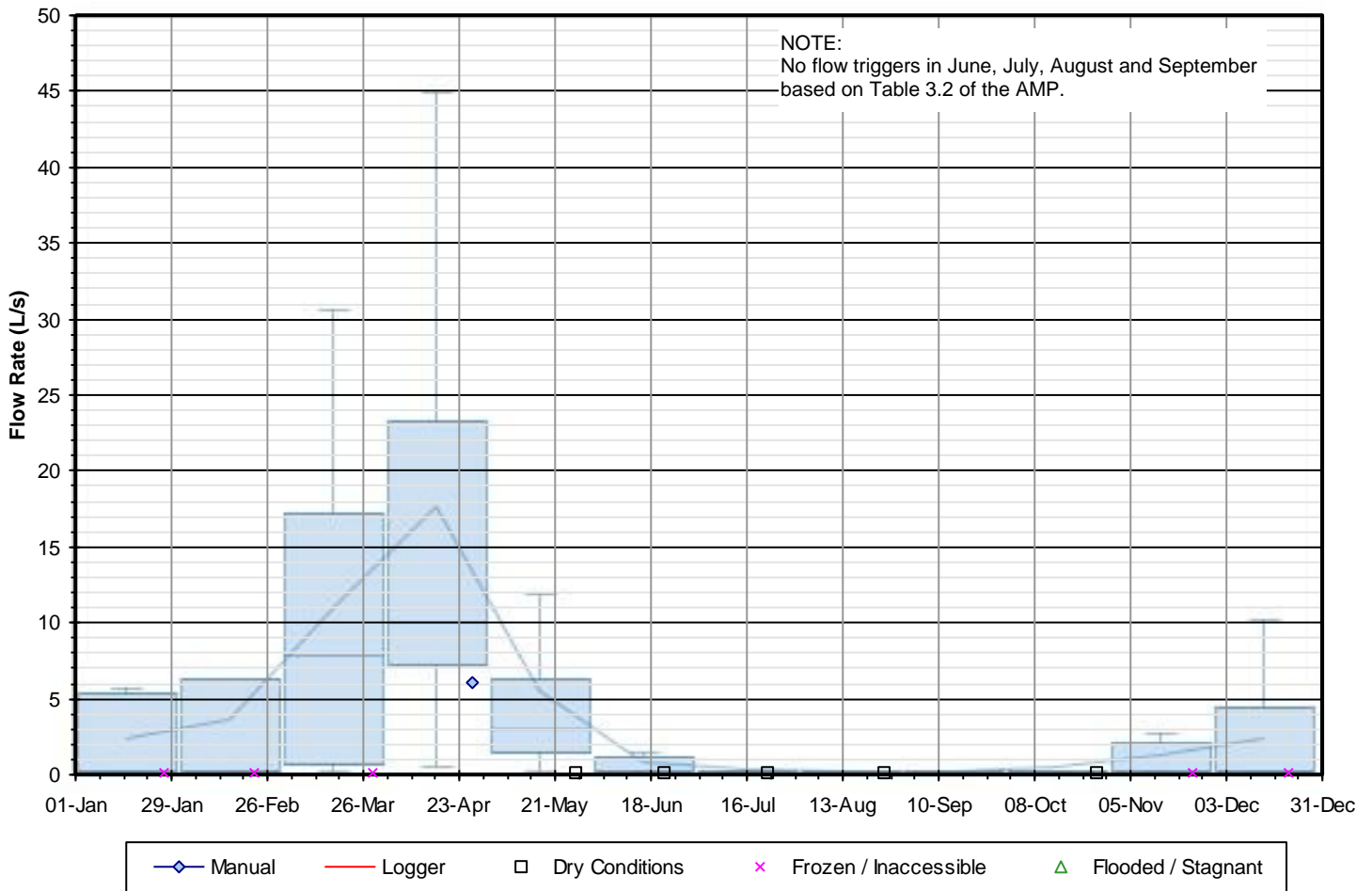
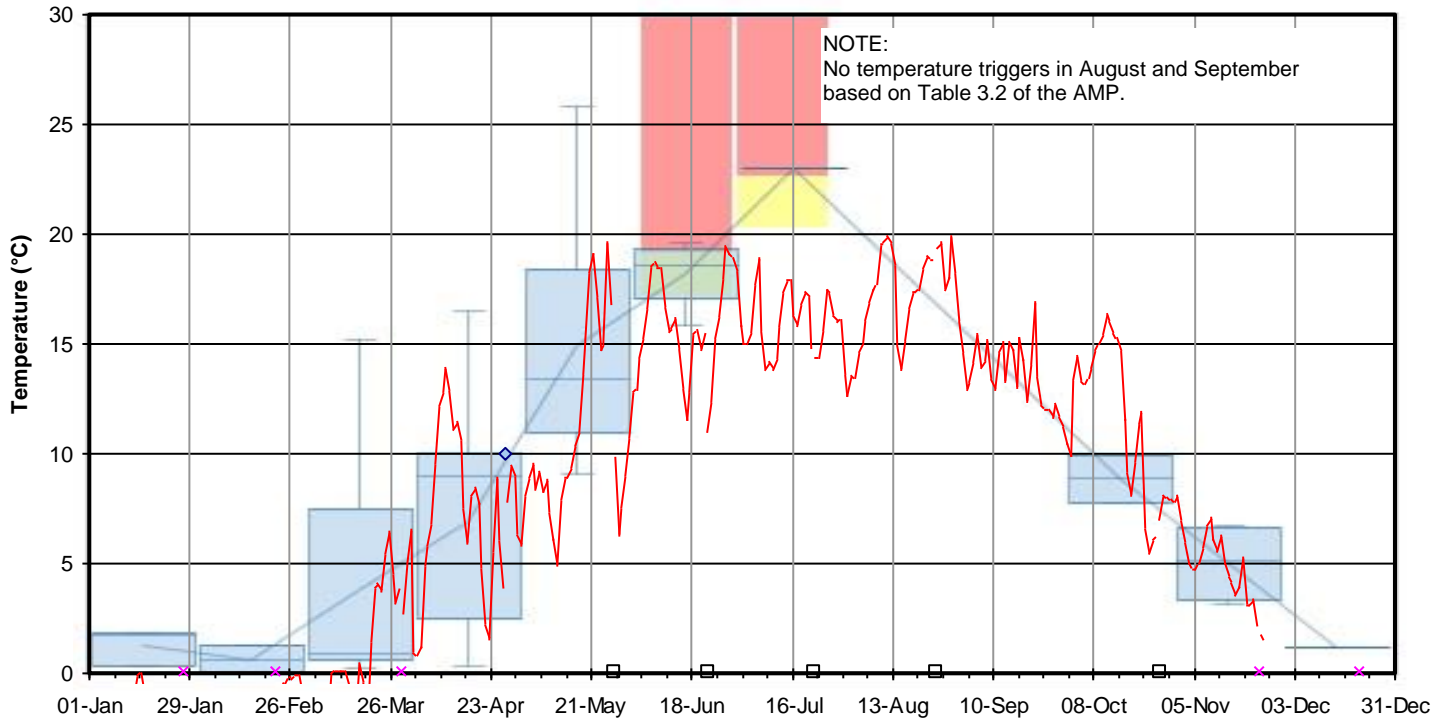
**SW3 - Rob Roy Swamp 2 West Outlet**



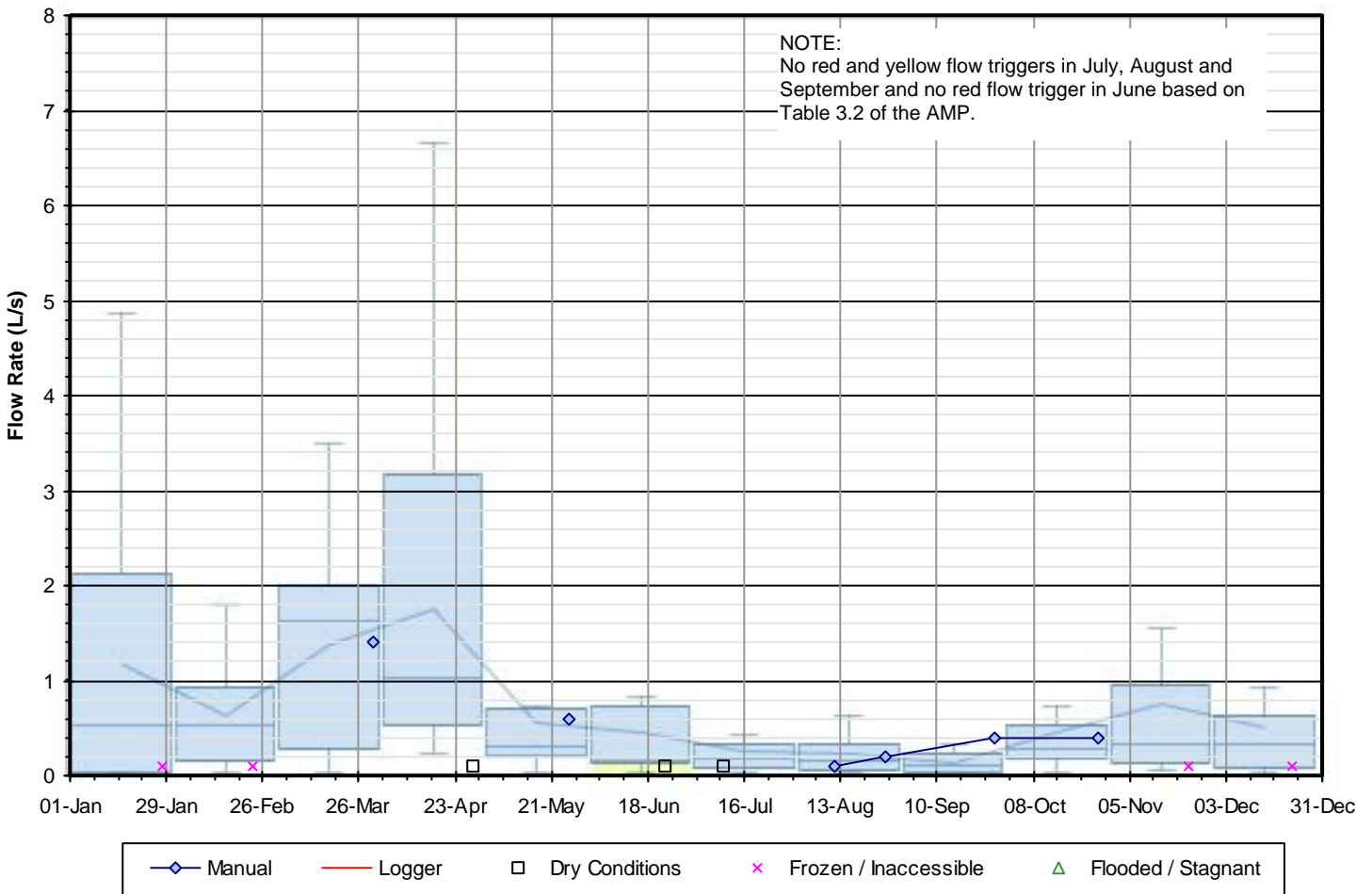
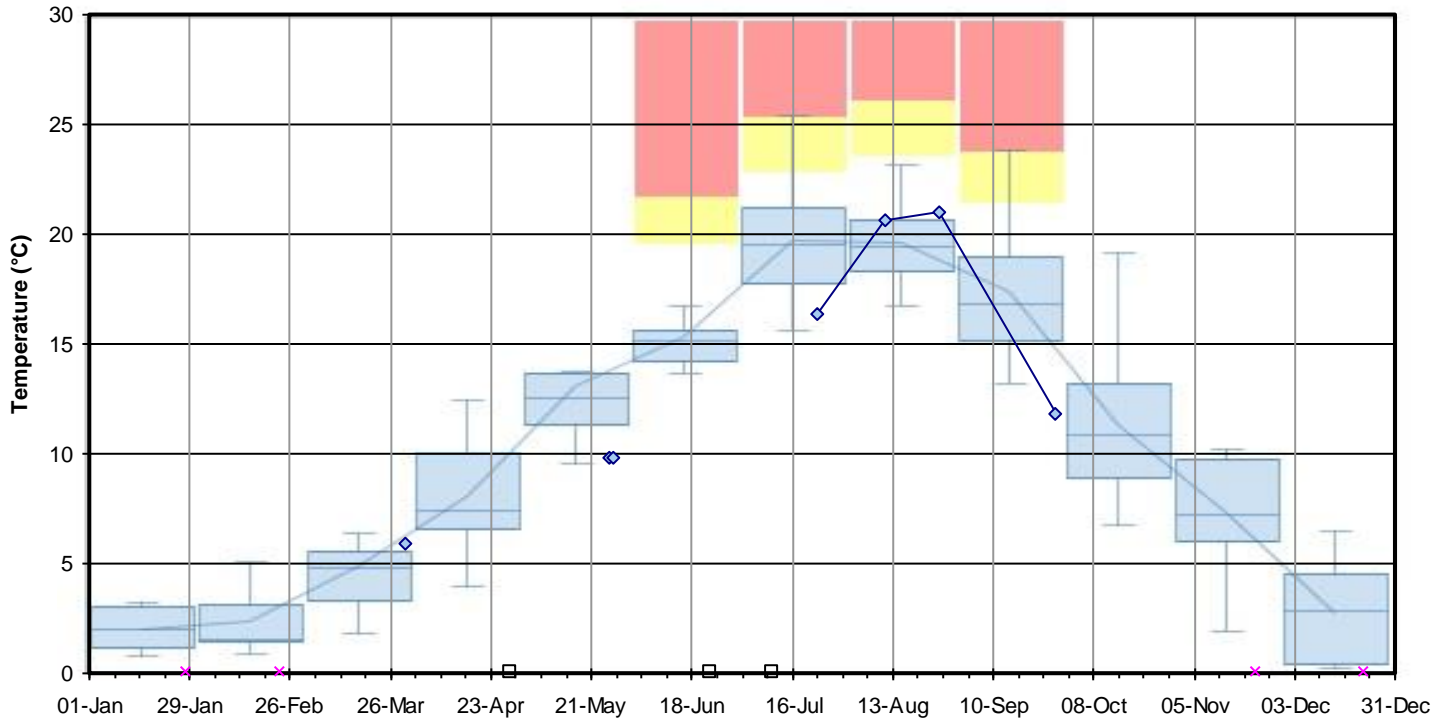
**Figure F-5 2021 Surface Water PITM Results**  
**SW6A - Beaver River Downstream of SW6 at Sideroad 30**



**Figure F-6 2021 Surface Water PITM Results**  
**SW9 - Inlet to Sinkhole on Bridson Property**

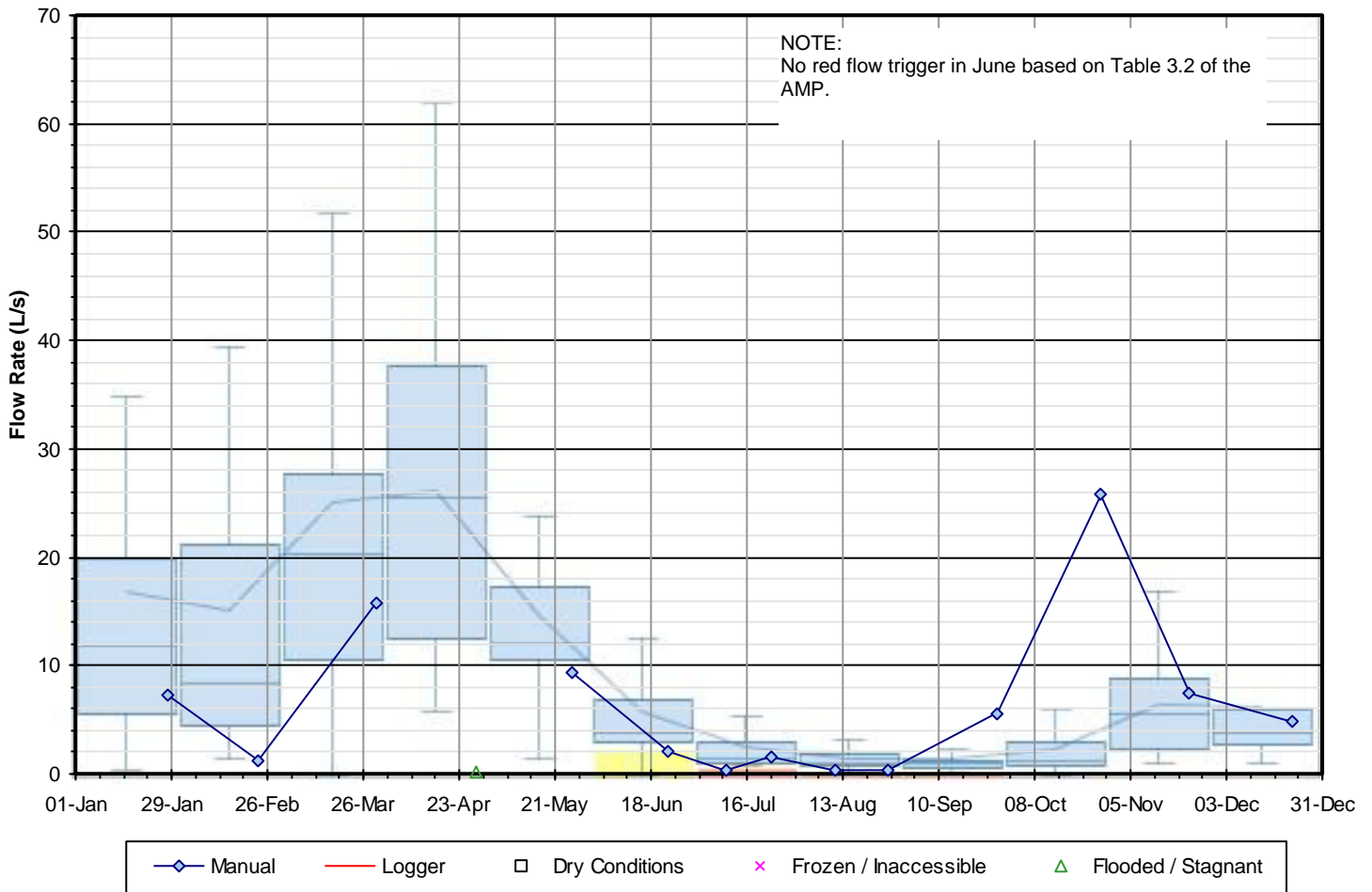
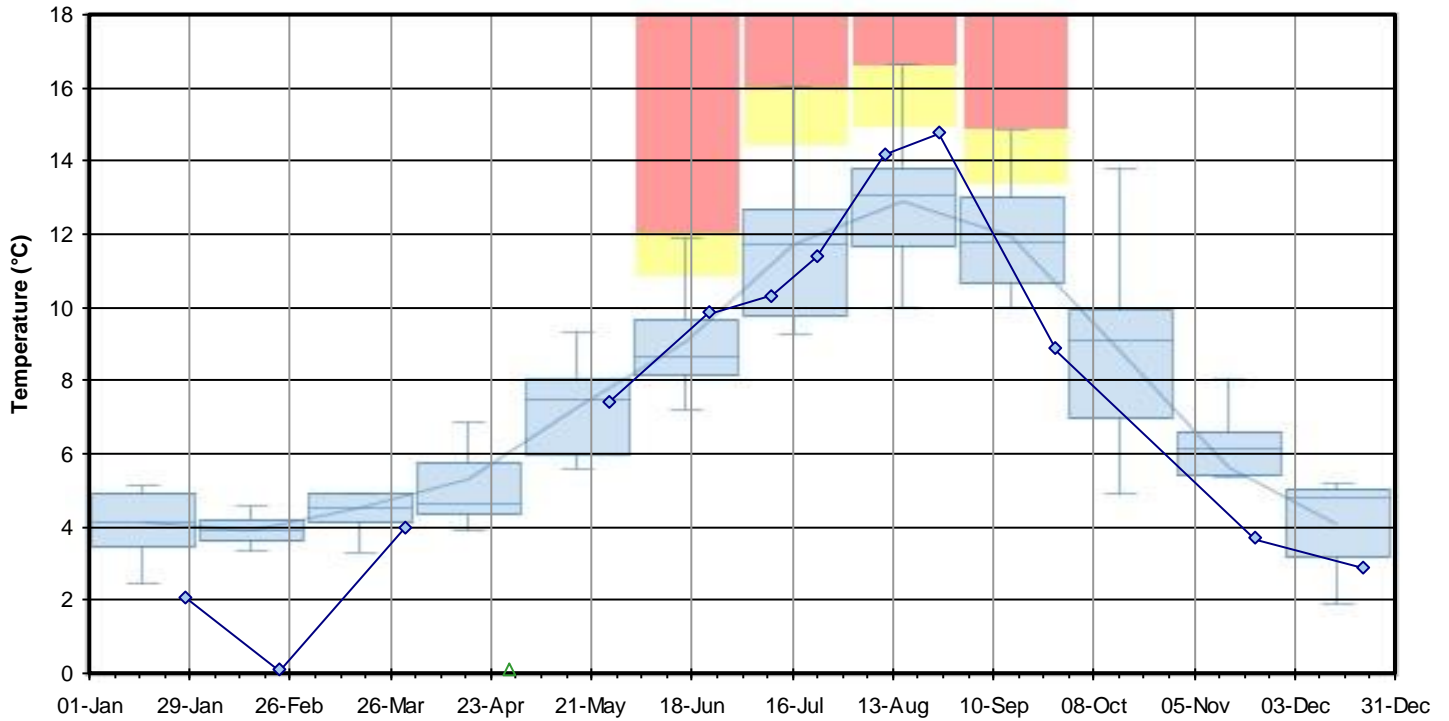


**Figure F-7 2021 Surface Water PITM Results**  
**SW10 - Escarpment Seep on Franks Property**

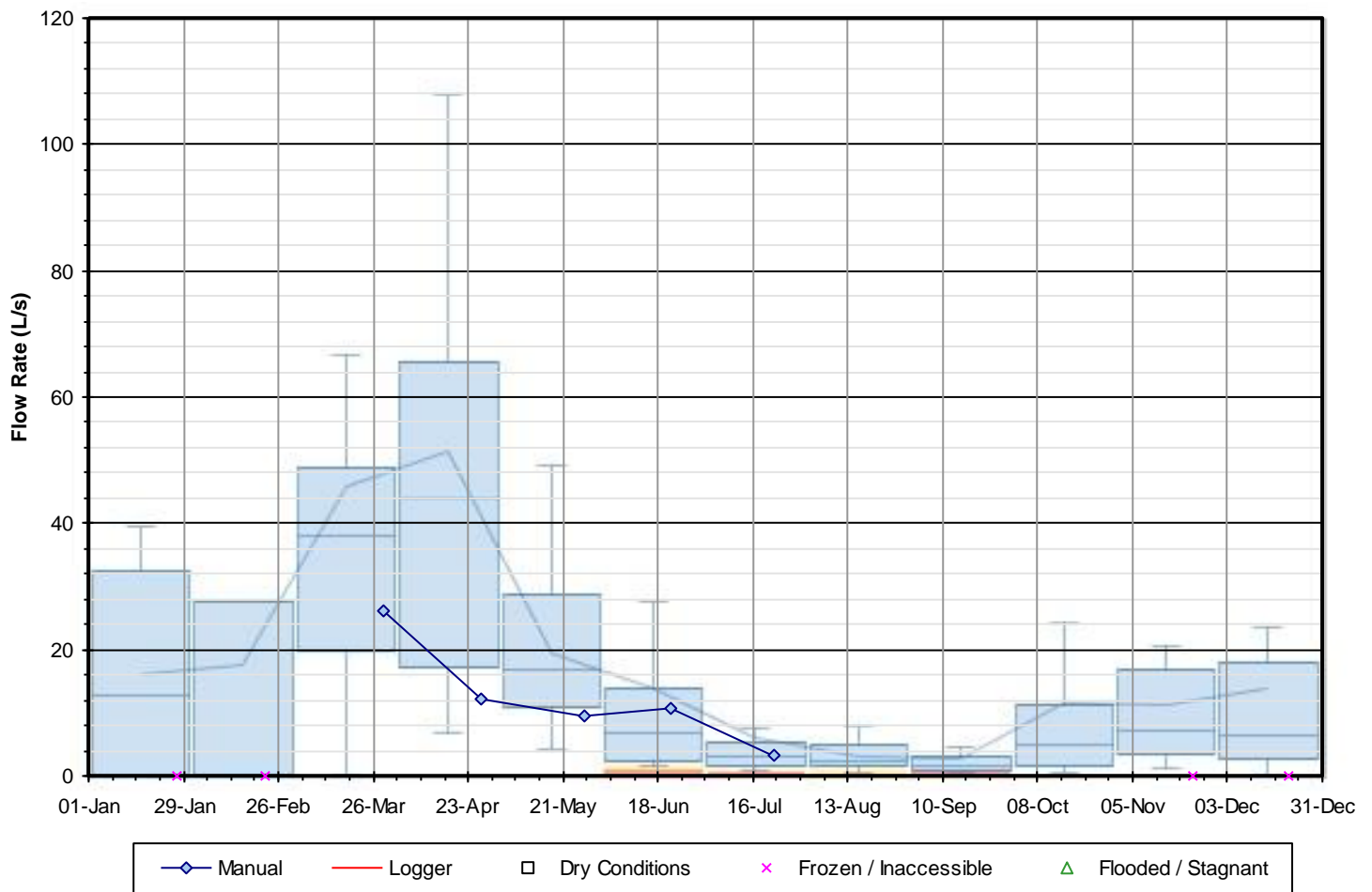
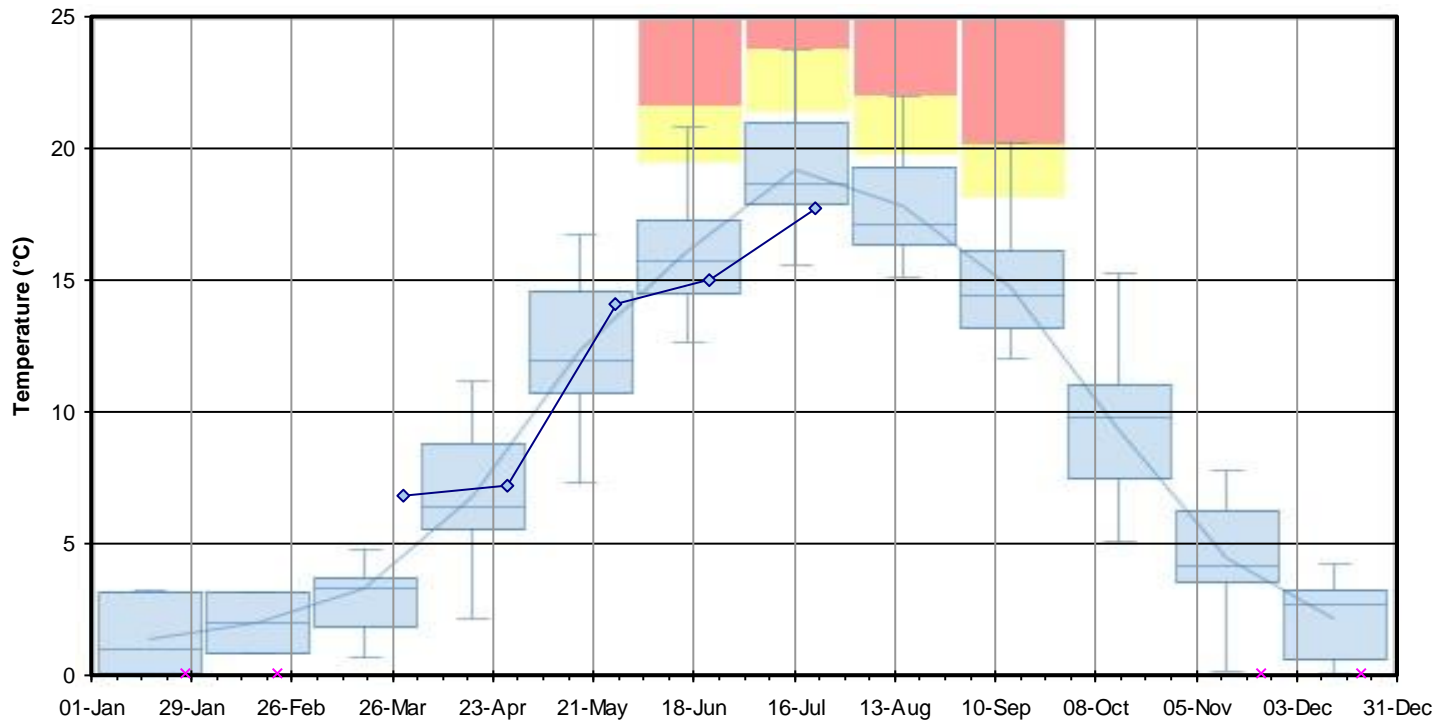




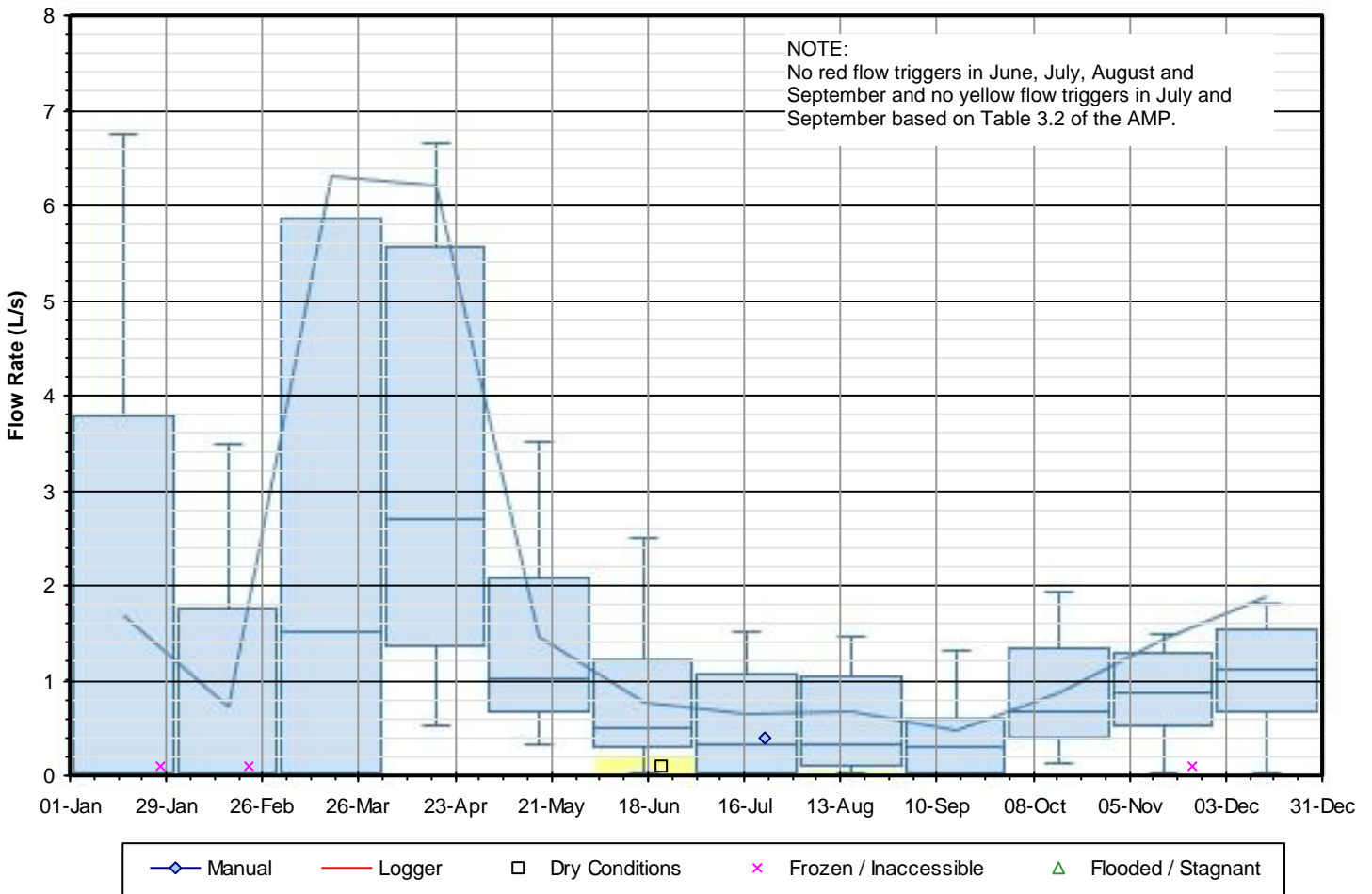
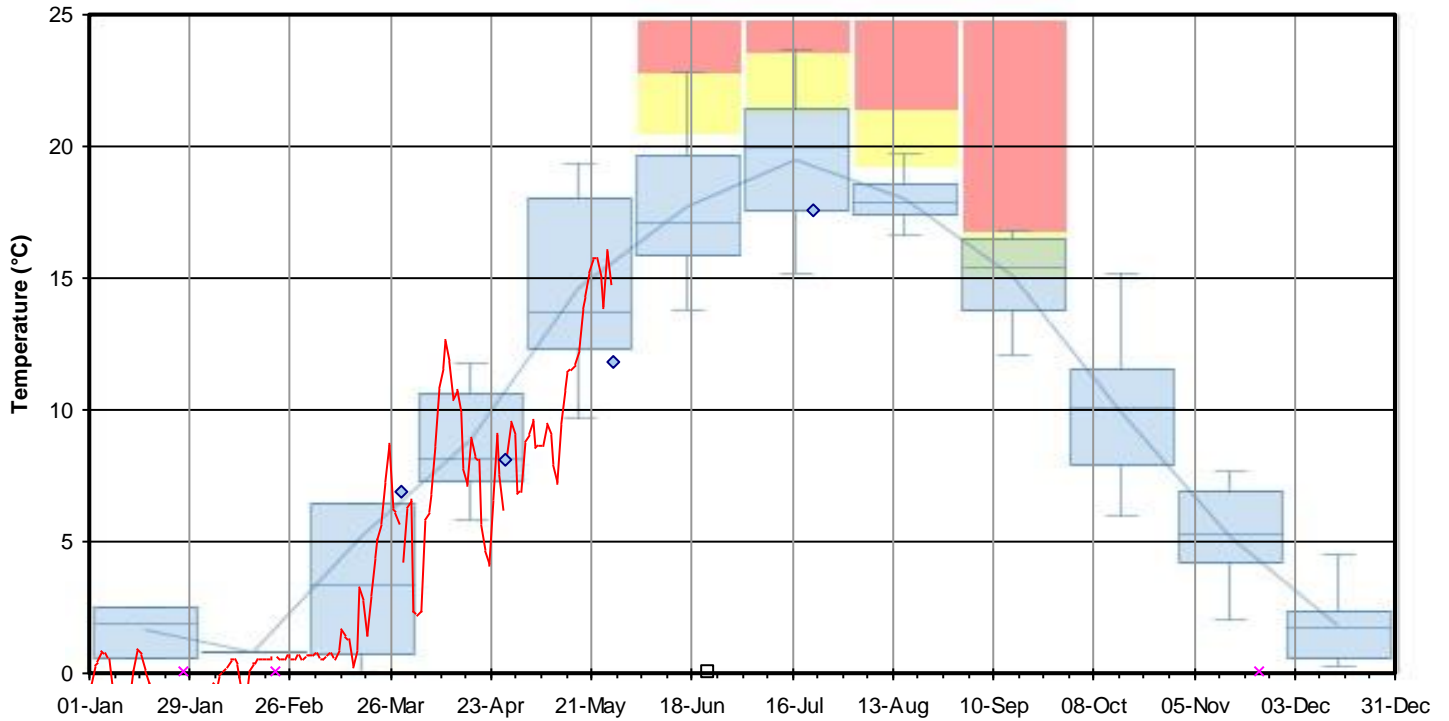
**Figure F-8 2021 Surface Water PITM Results**  
**SW11 - Culmination of Escarpment Seeps SW11A-D on Franks Property**



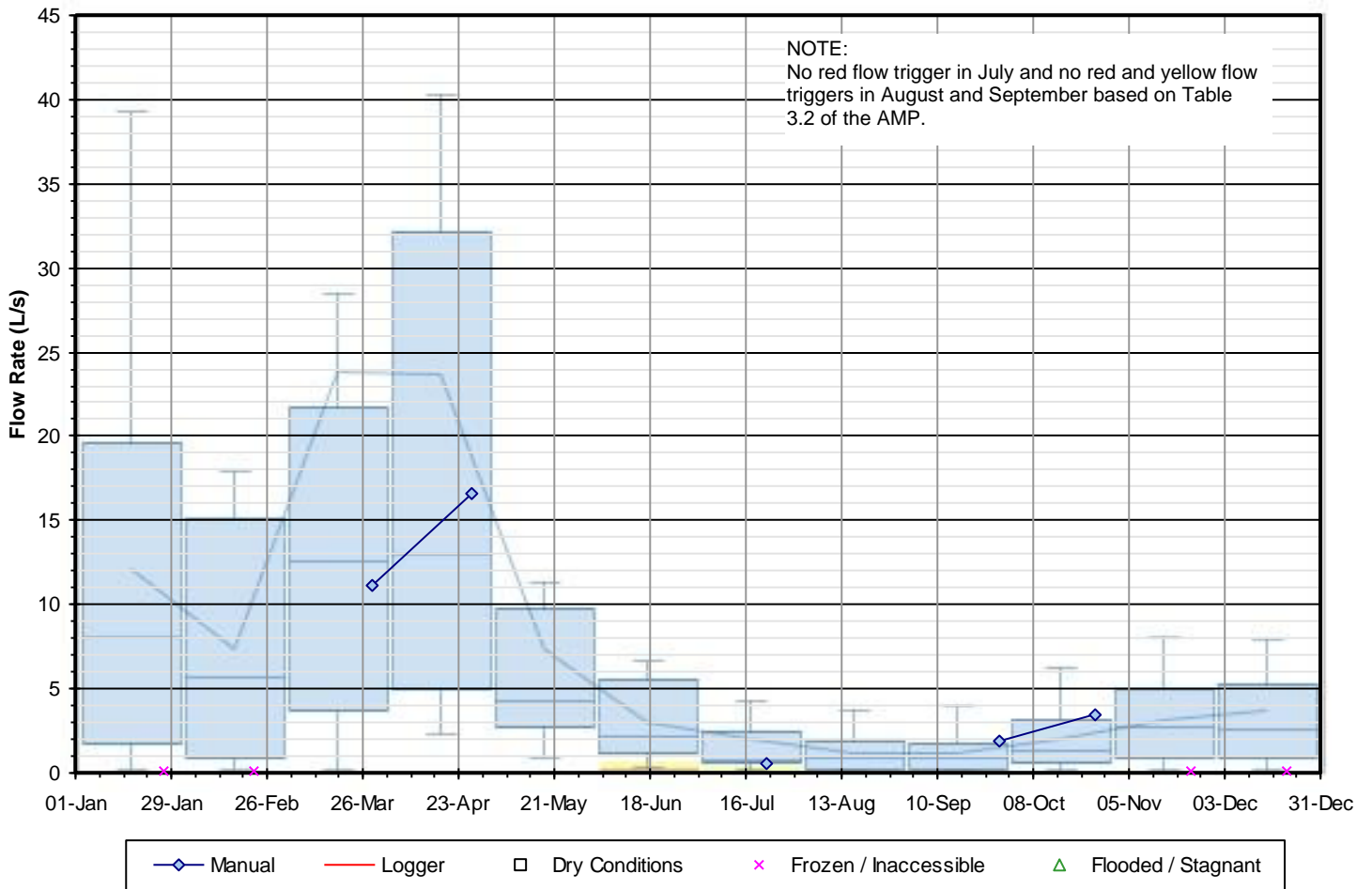
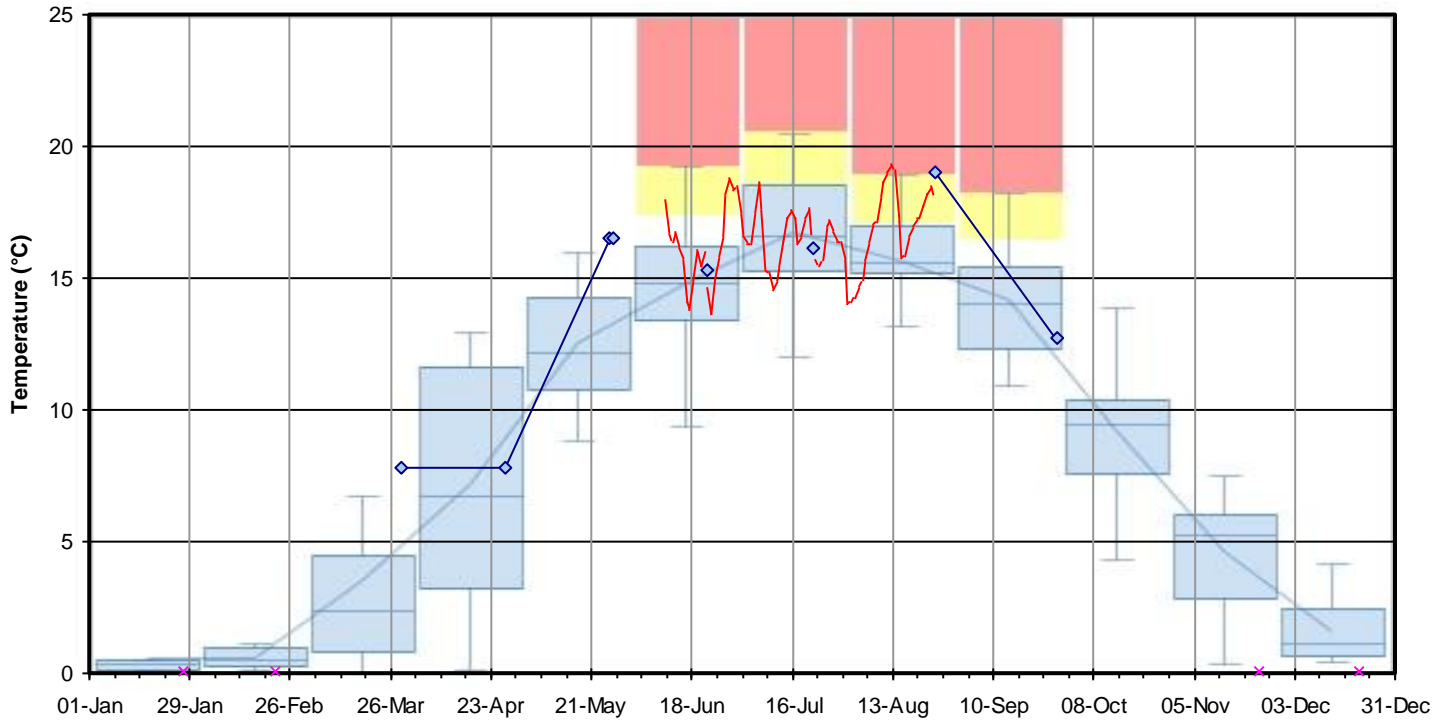
**Figure F-9 2021 Surface Water PITM Results**  
**SW14 - Batteaux Creek Downstream of Franks Pond**



**Figure F-10 2021 Surface Water PITM Results**  
**SW15 - Batteaux Creek Downstream of Franks Pond**

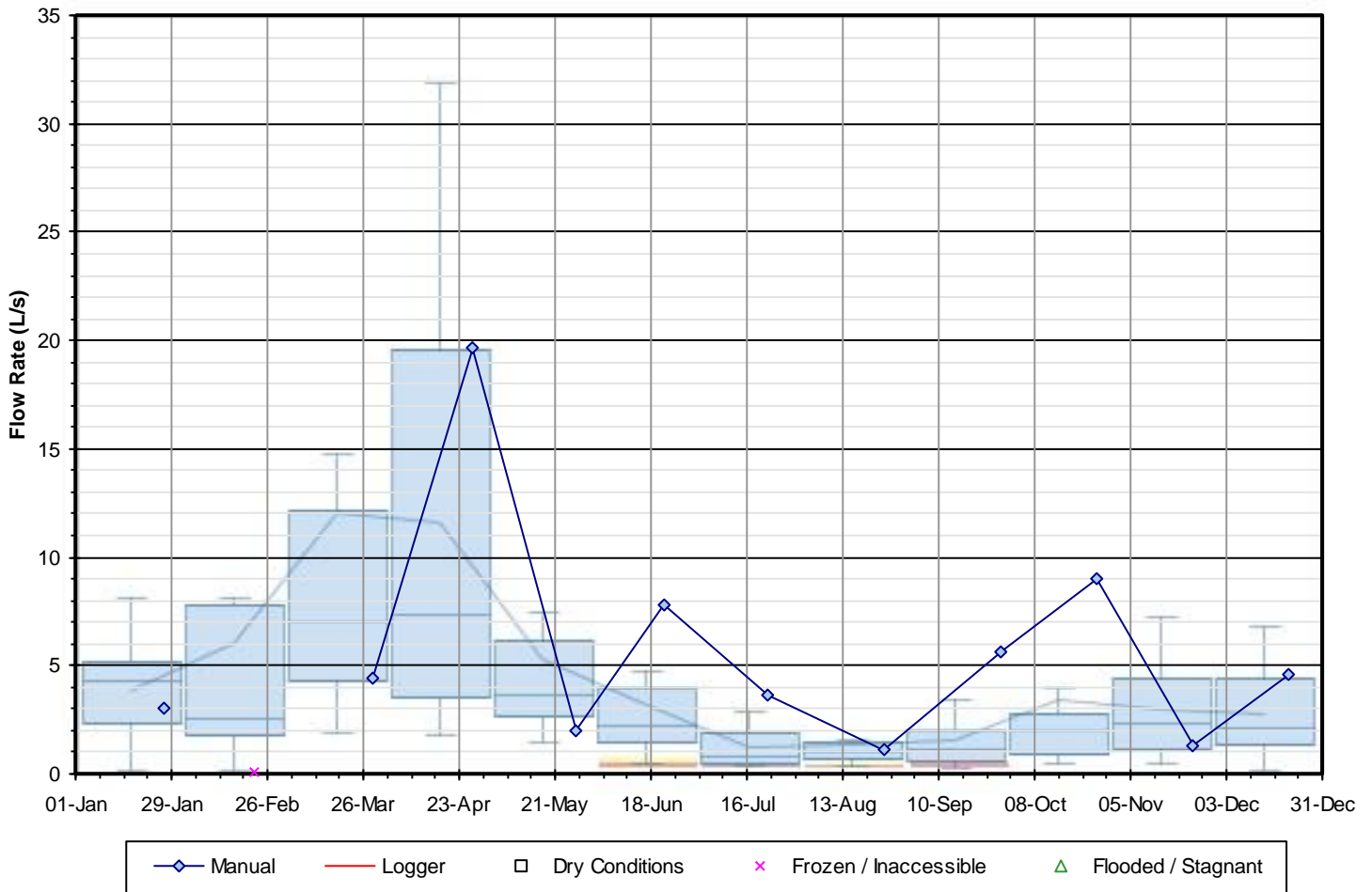
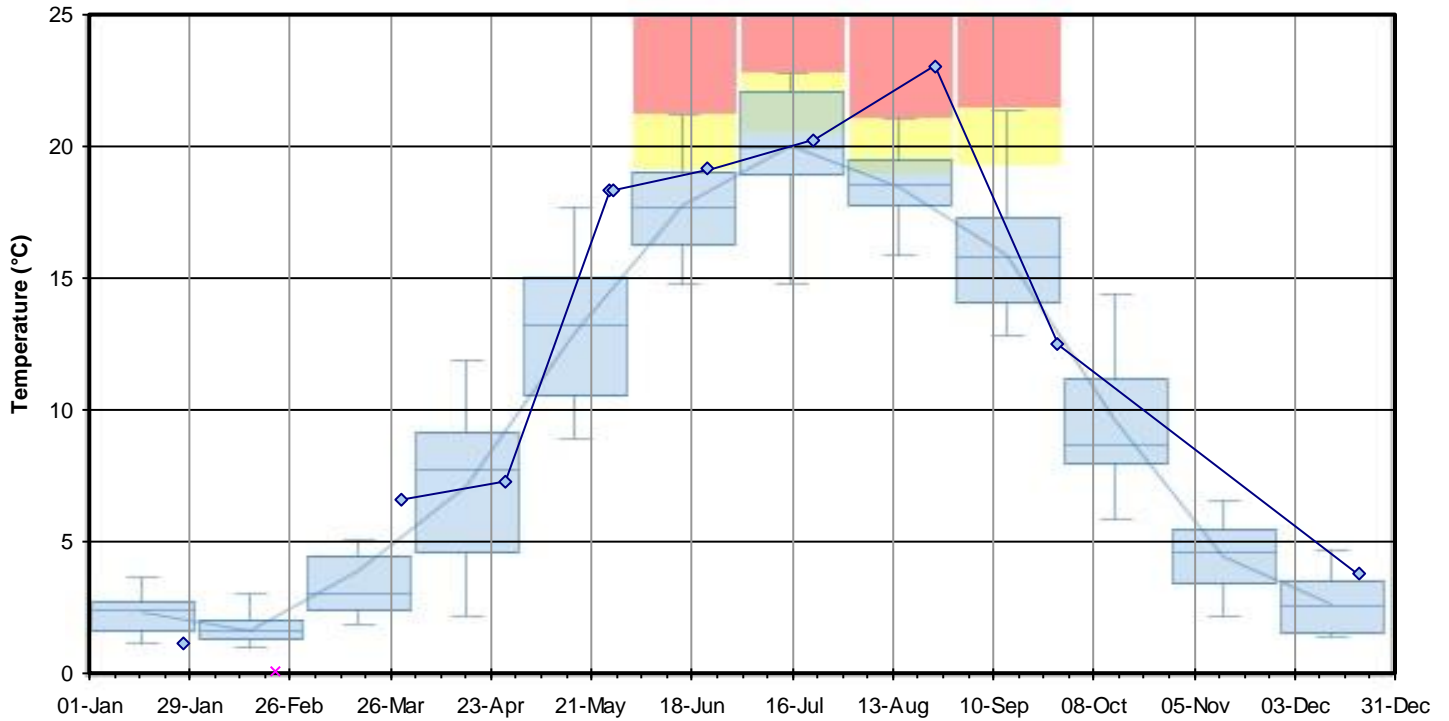


**Figure F-11 2021 Surface Water PITM Results**  
**SW16 - Pretty River Escarpment Seep**



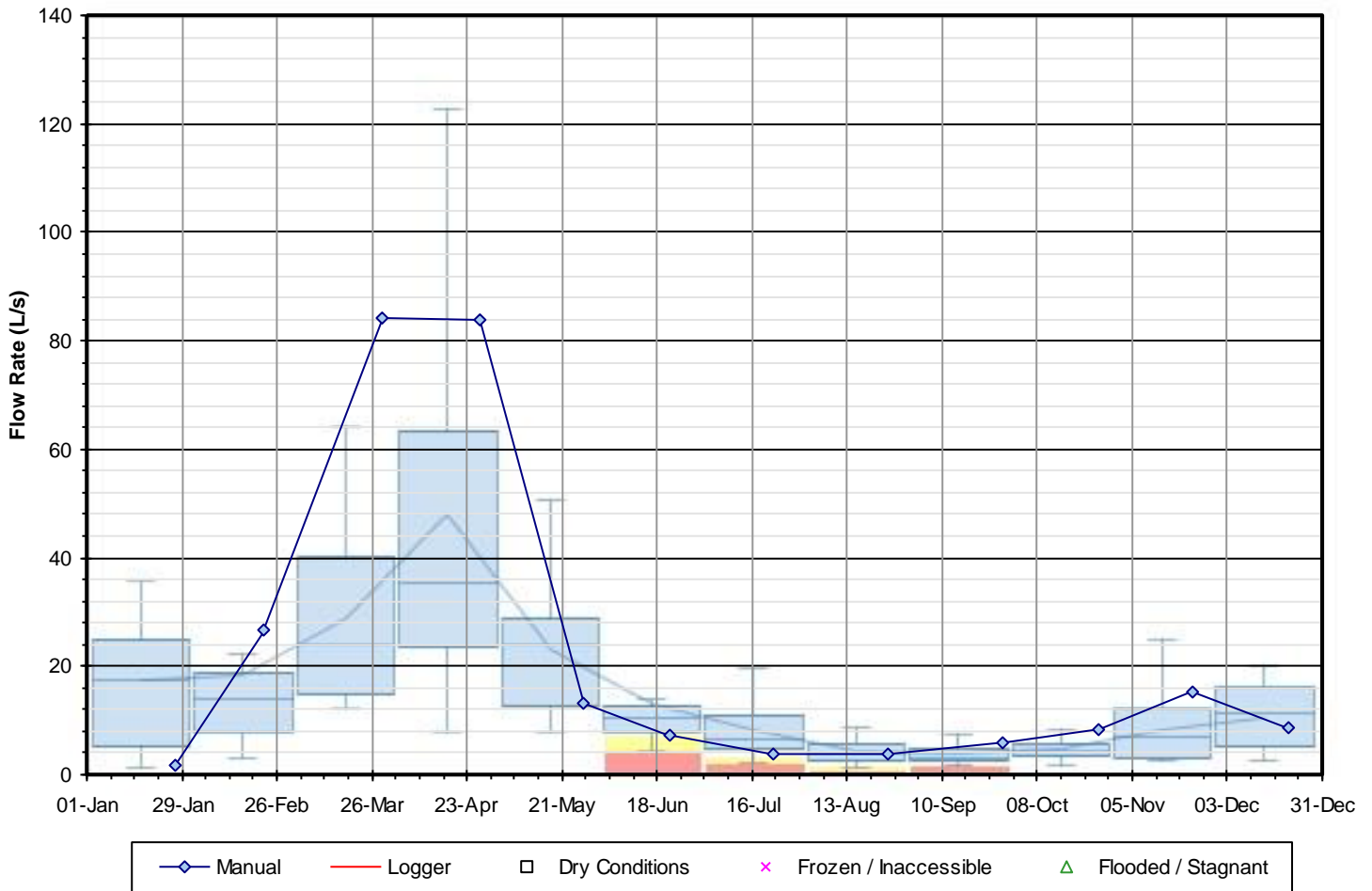
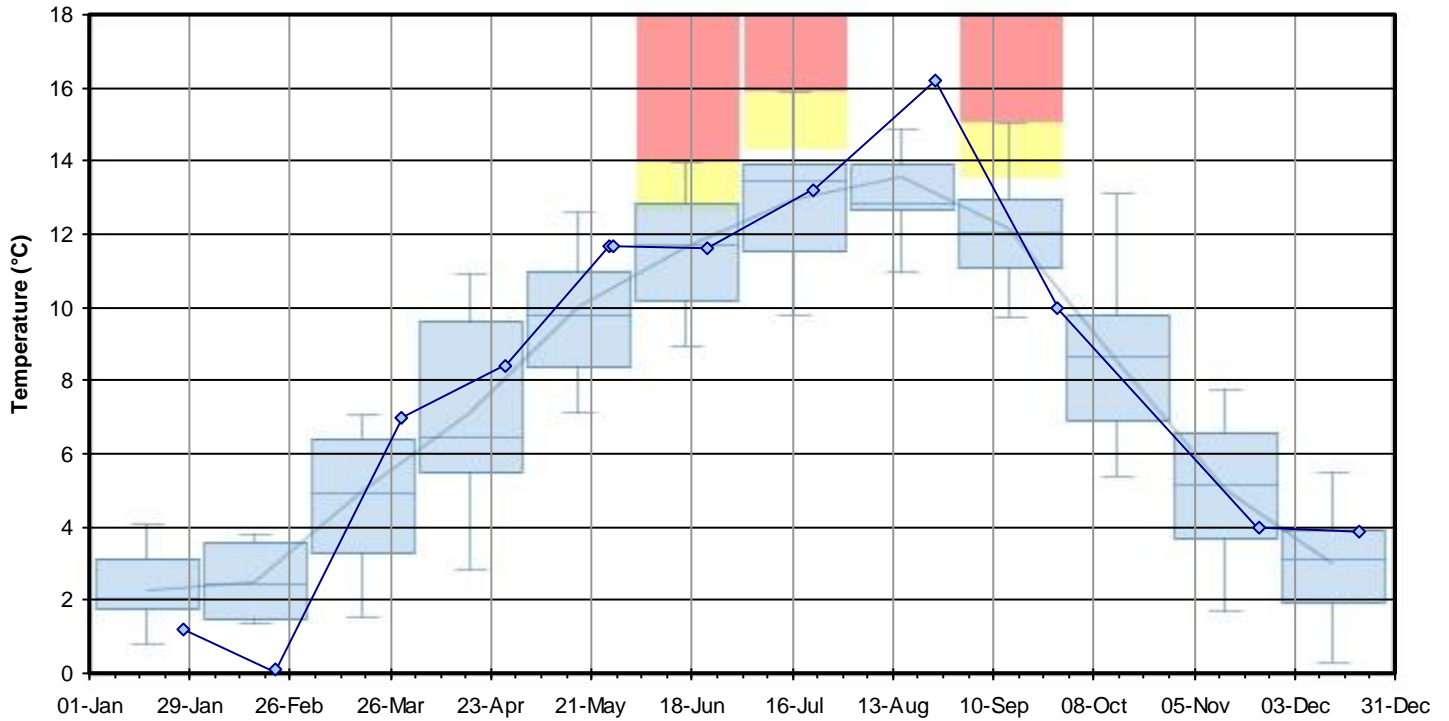
**Figure F-12 2021 Surface Water PITM Results**

**SW17 - Sestito Pond Outlet**

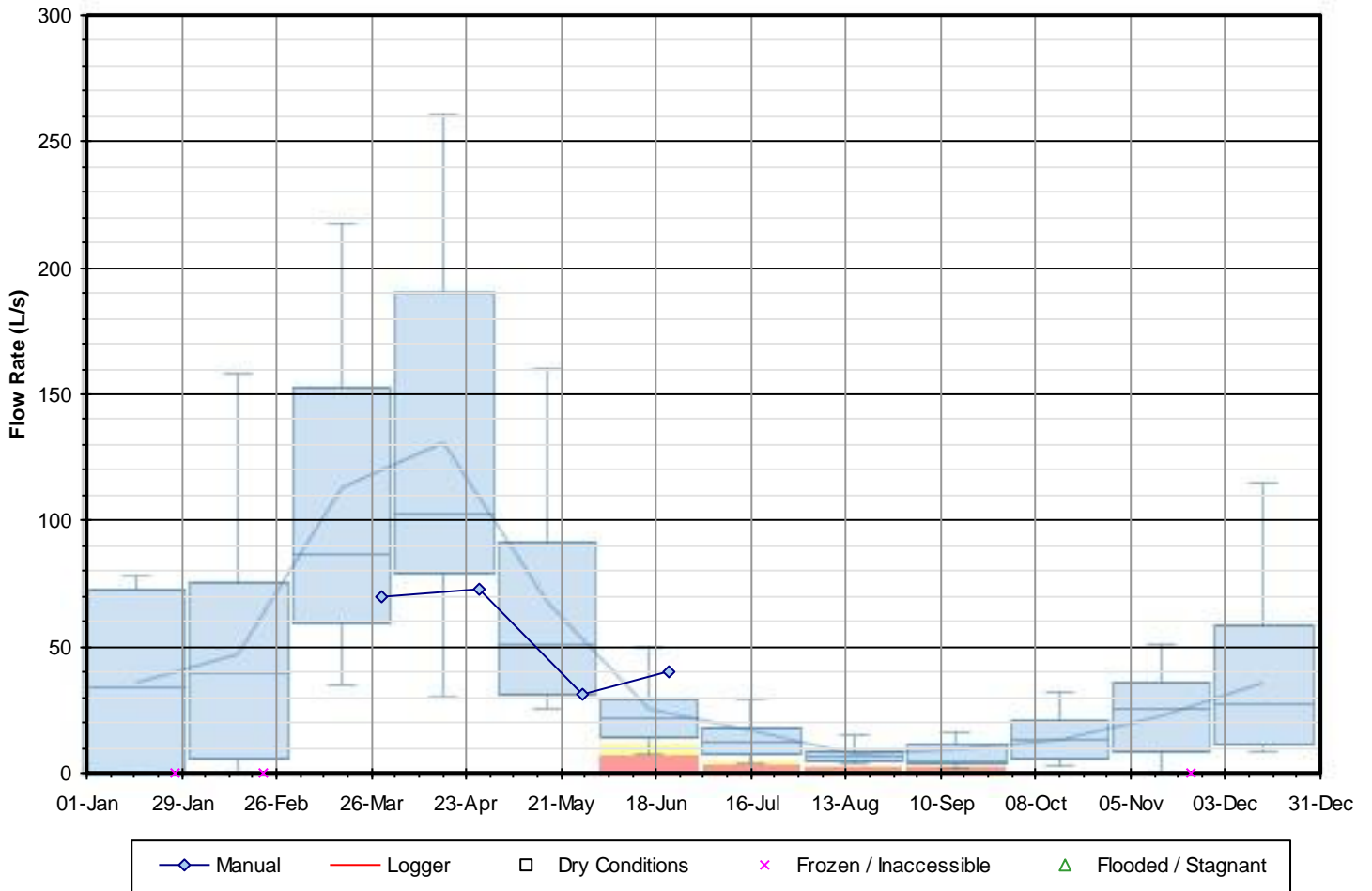
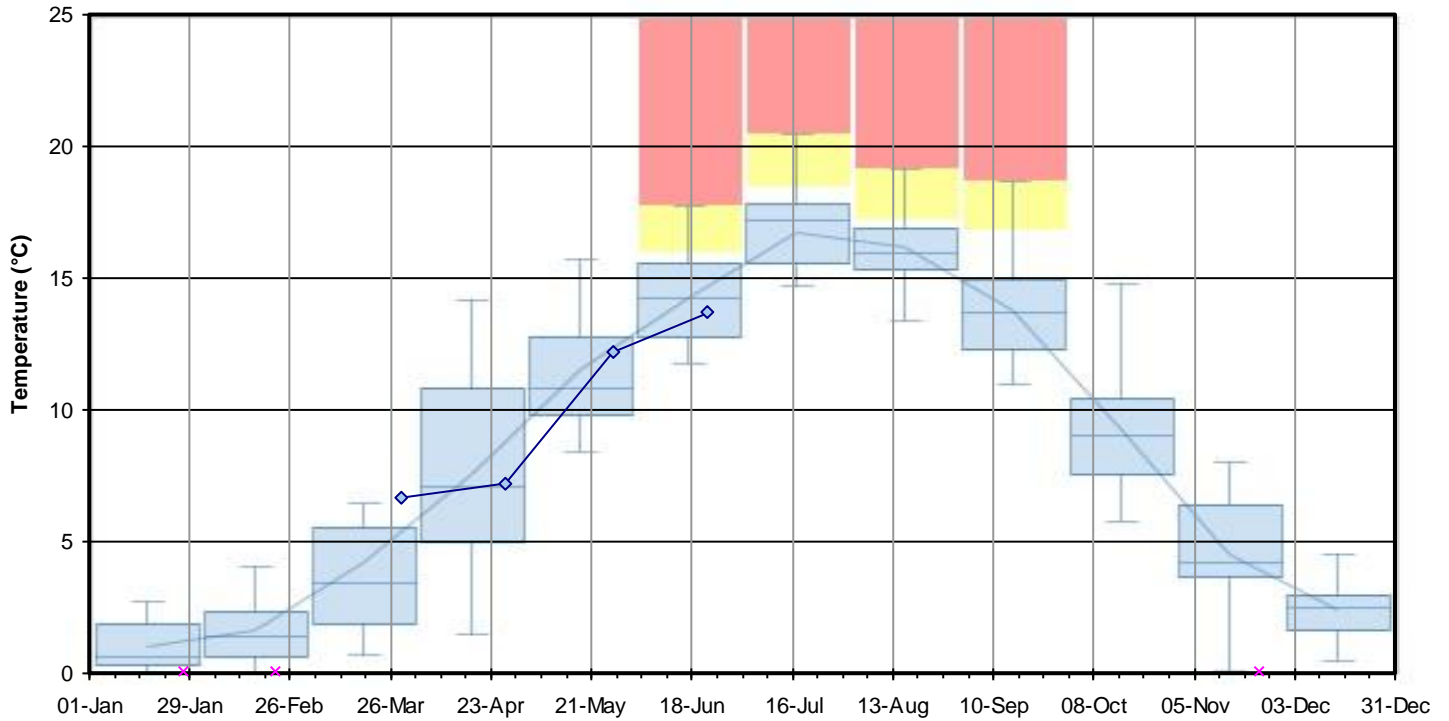


**Figure F-13 2021 Surface Water PITM Results**

**SW17A - Downstream of SW17**

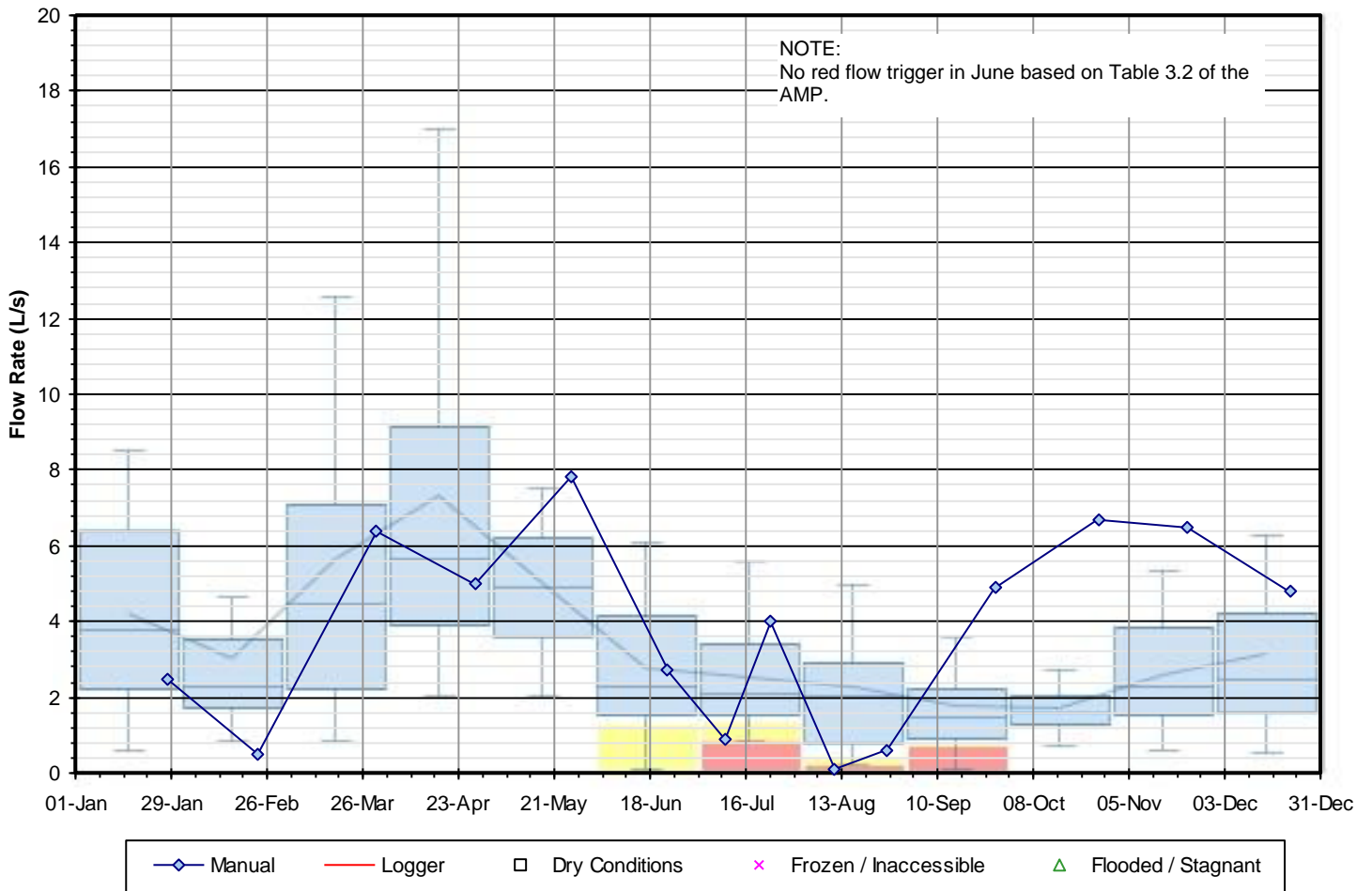
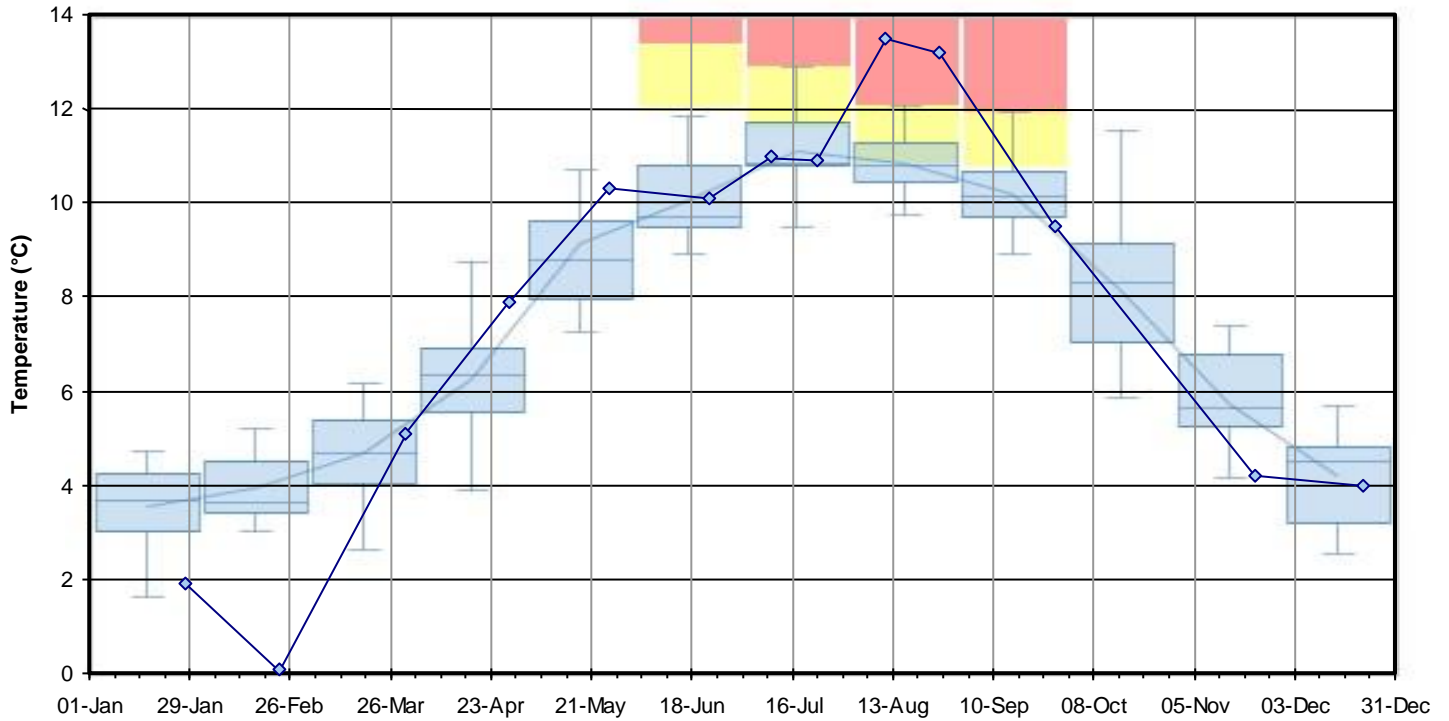


**Figure F-14 2021 Surface Water PITM Results**  
**SW18 - Pretty River at Concession 10**



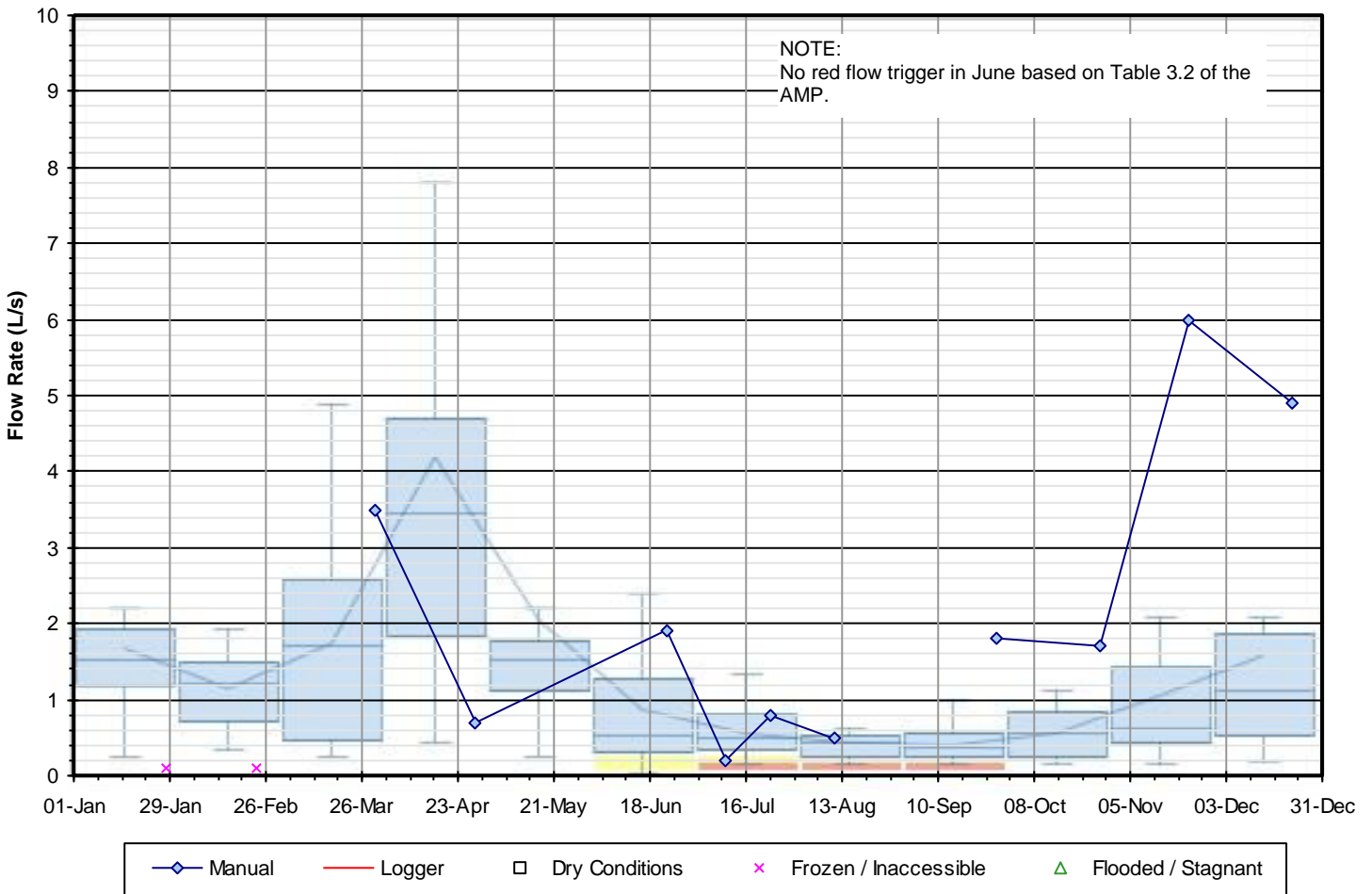
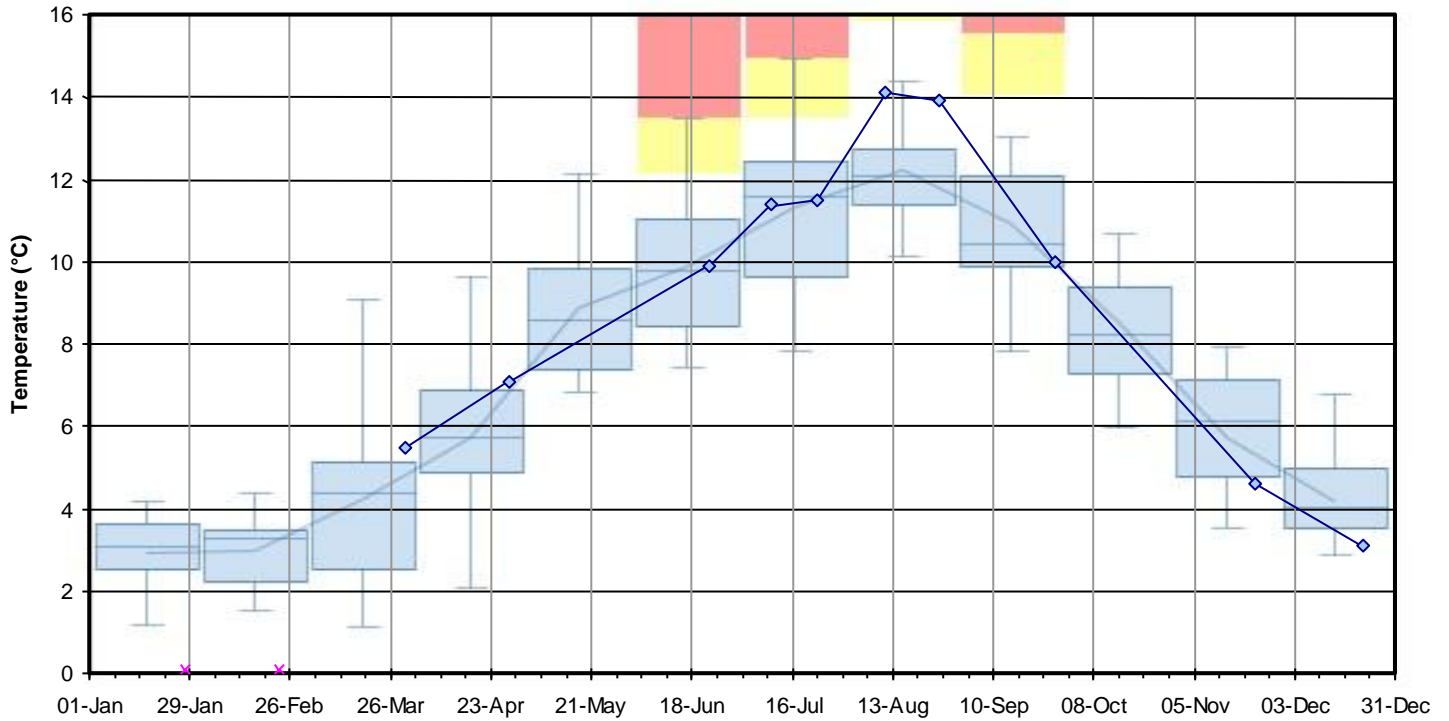
**Figure F-15 2021 Surface Water PITM Results**

**SW21C - Upstream of SW21B**





**Figure F-16 2021 Surface Water PITM Results**  
**SW24A - Escarpment Seep on Sestito Property**



**Figure F-17 2021 Surface Water PITM Results**

**SW77 - Escarpment Seep to Pretty River**

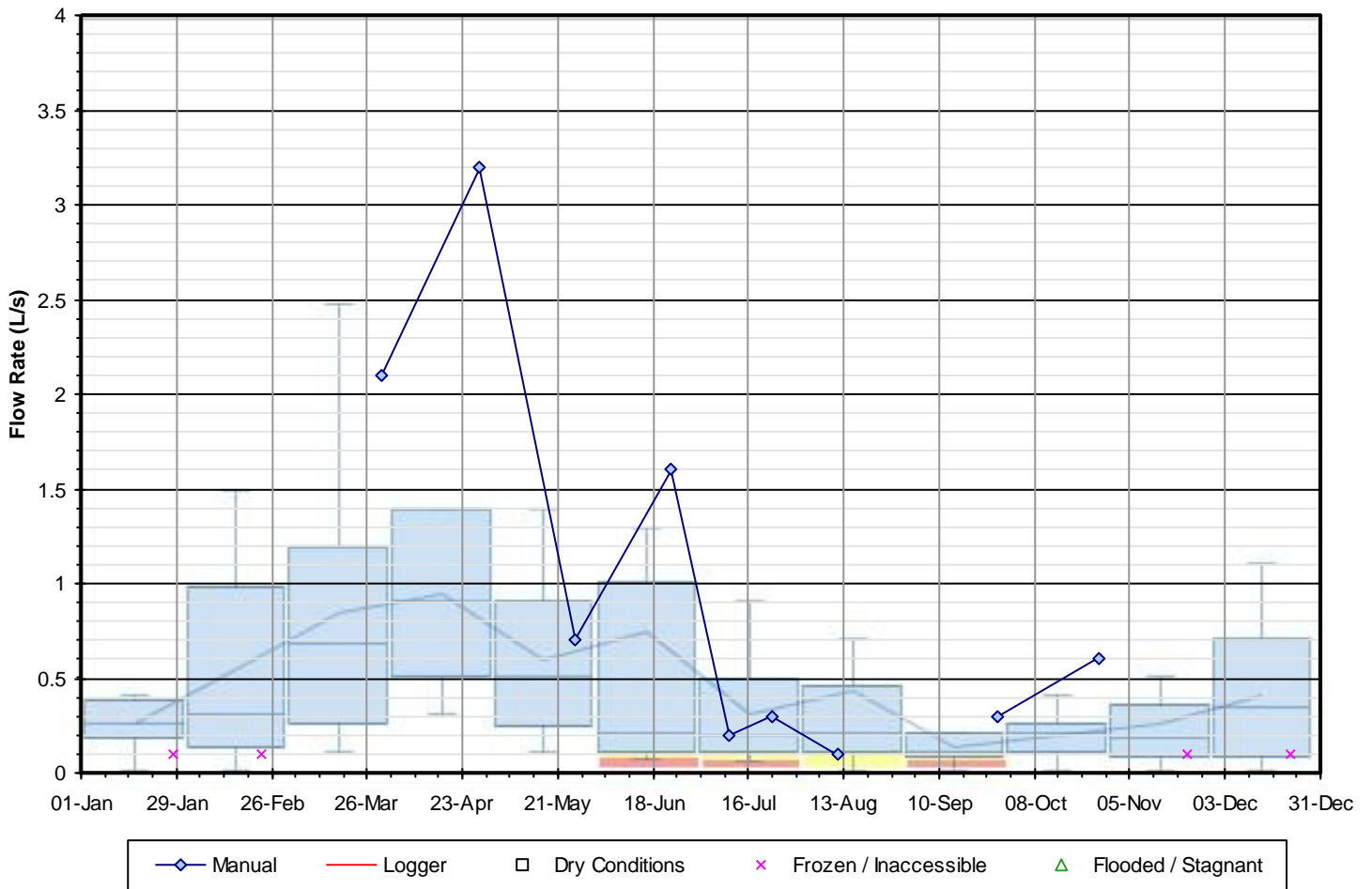
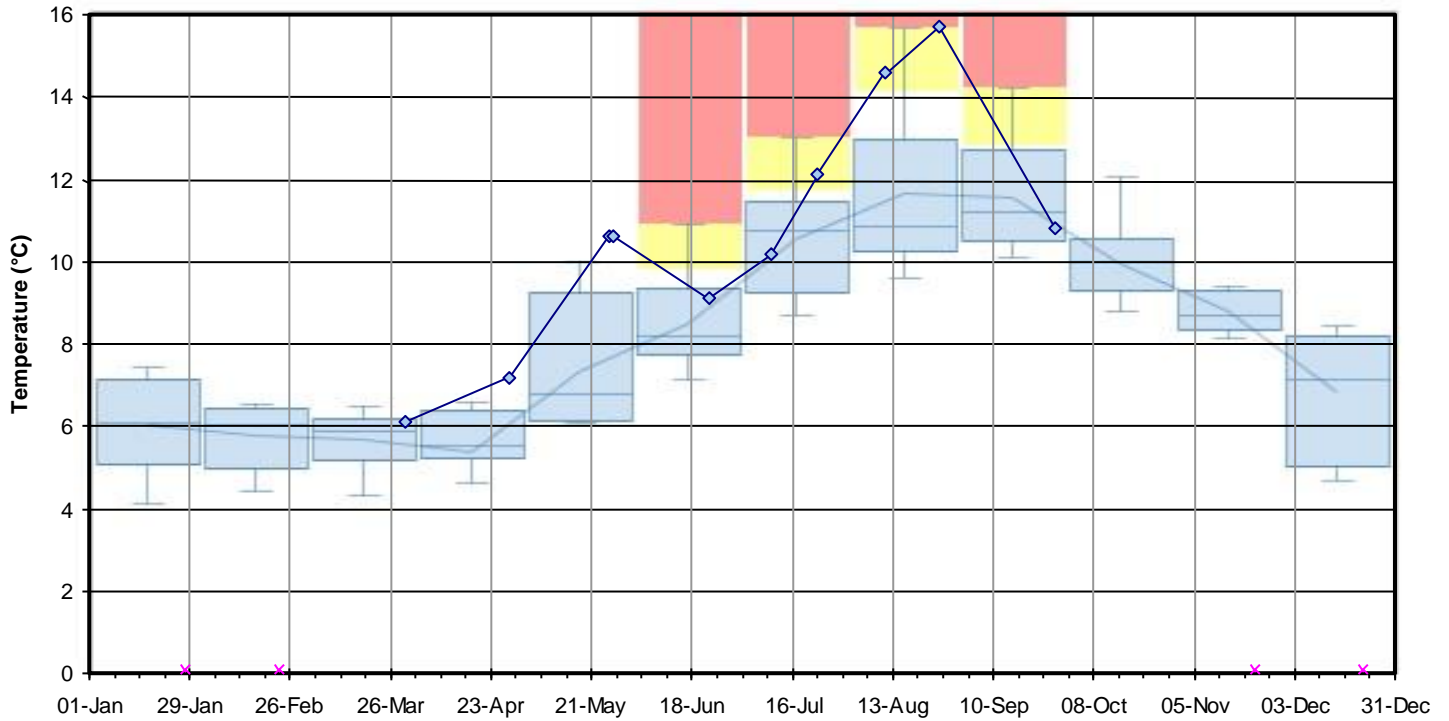
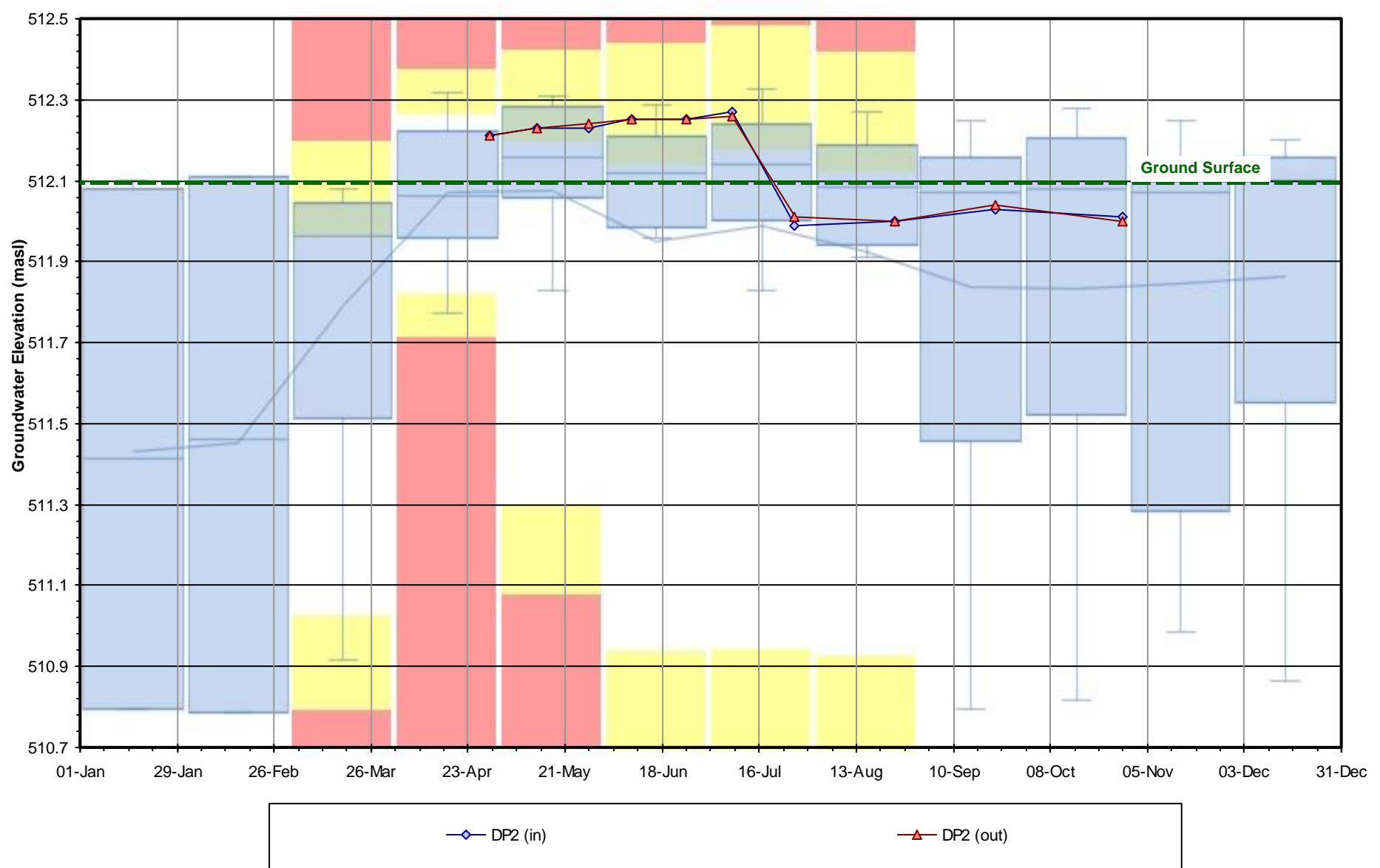


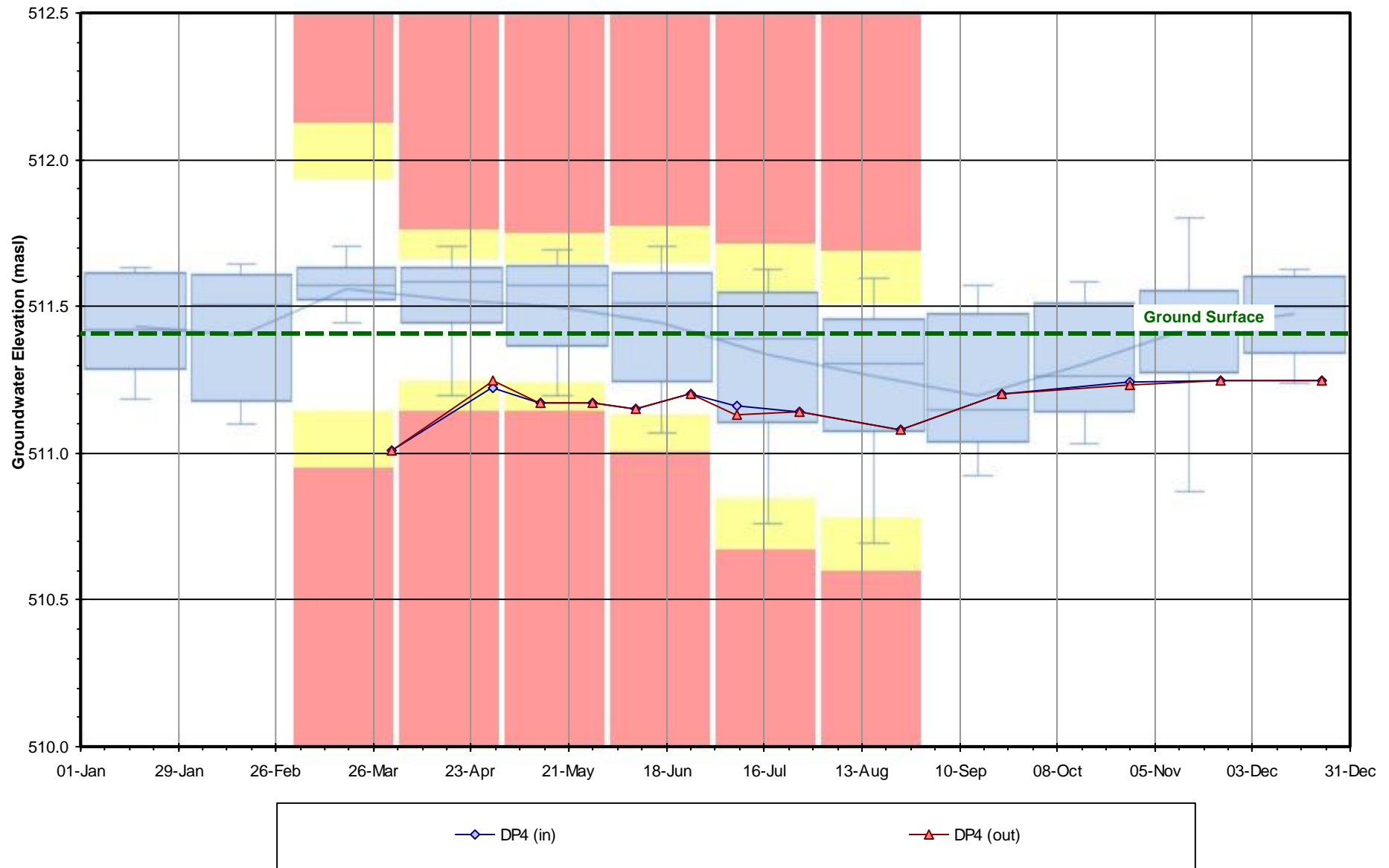
Figure F-18 2021 Groundwater / Surface Water PITM Results

DP2 - Rob Roy Swamp 6 Northeast Portion



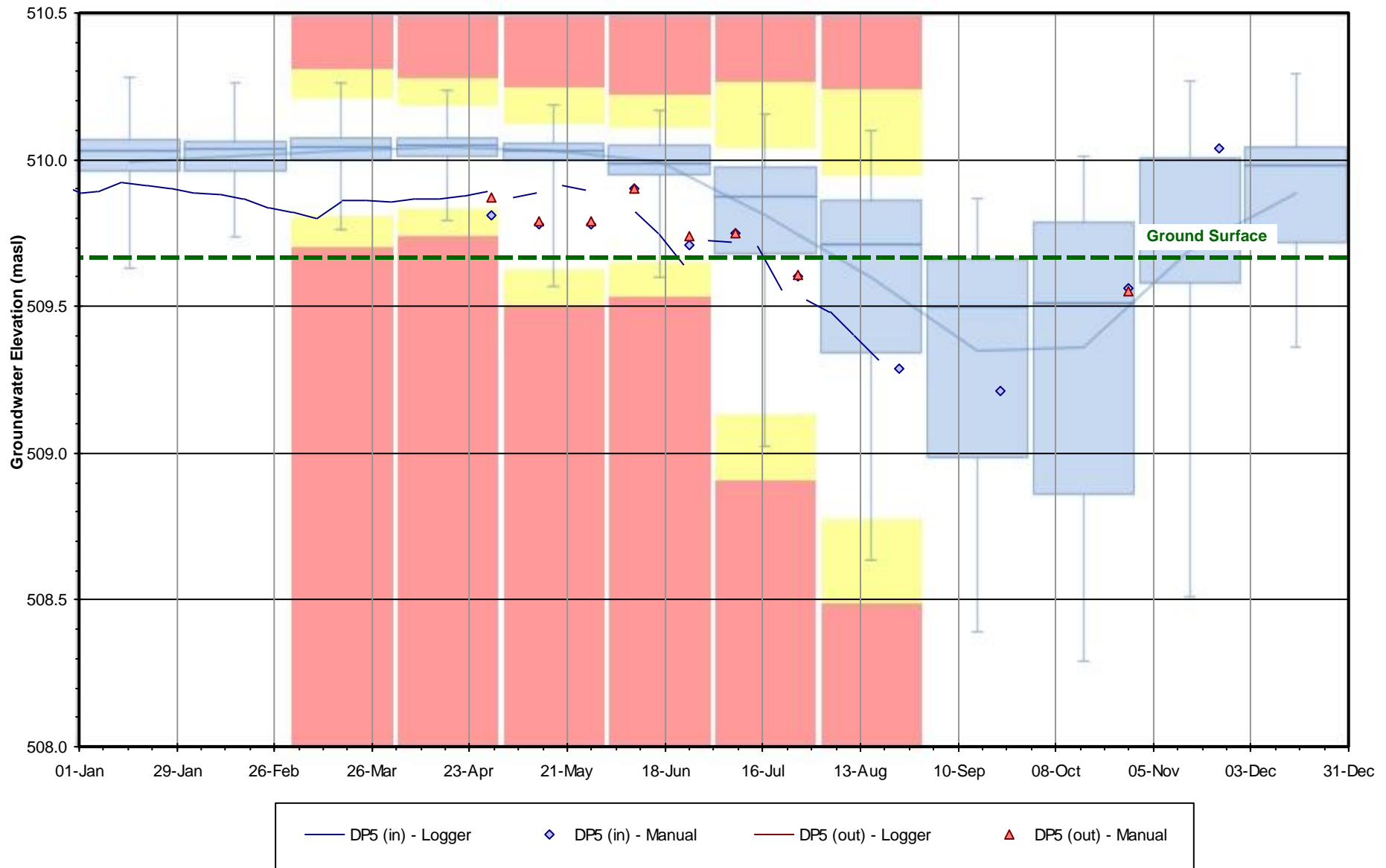
**Figure F-19 2021 Groundwater / Surface Water PITM Results**

**DP4 - Rob Roy Swamp 6 West of Clearview Townline**



**Figure F-20 2021 Groundwater / Surface Water PITM Results**

**DP5 - Rob Roy Swamp 2 Vernal Pool**



**Figure F-21 2021 Groundwater / Surface Water PITM Results**

**DP6 - ANSI Wetland A Vernal Pool**

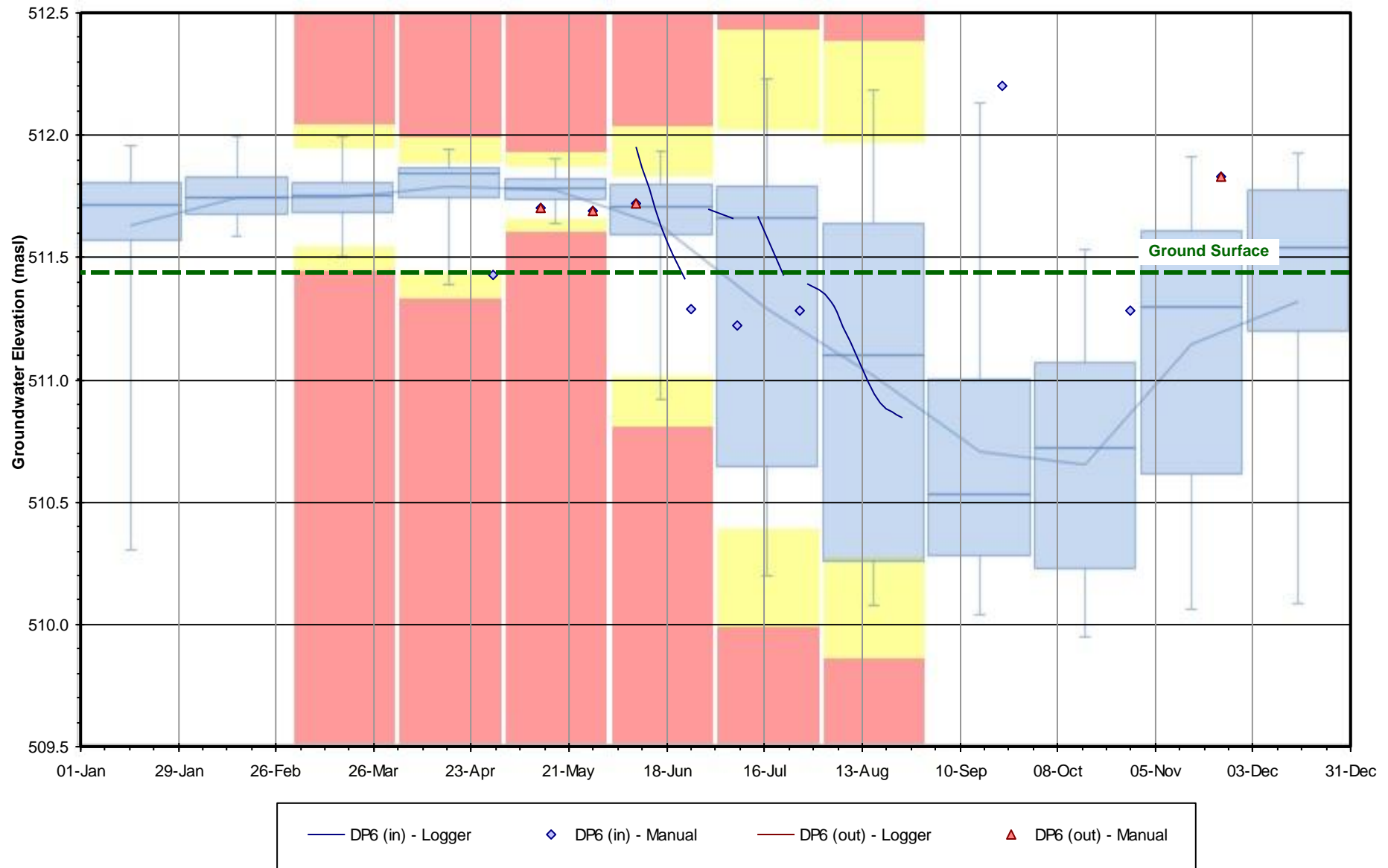
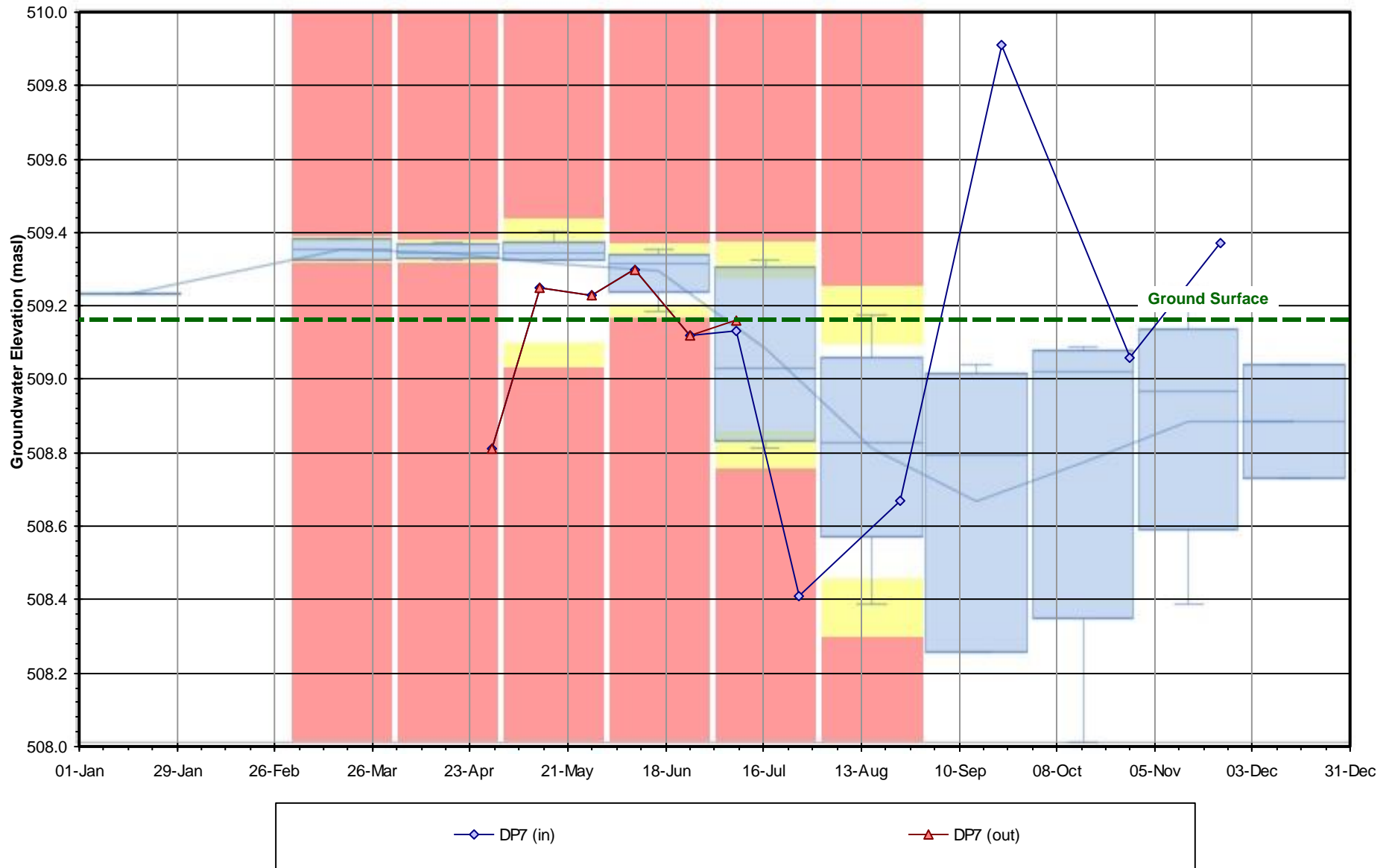


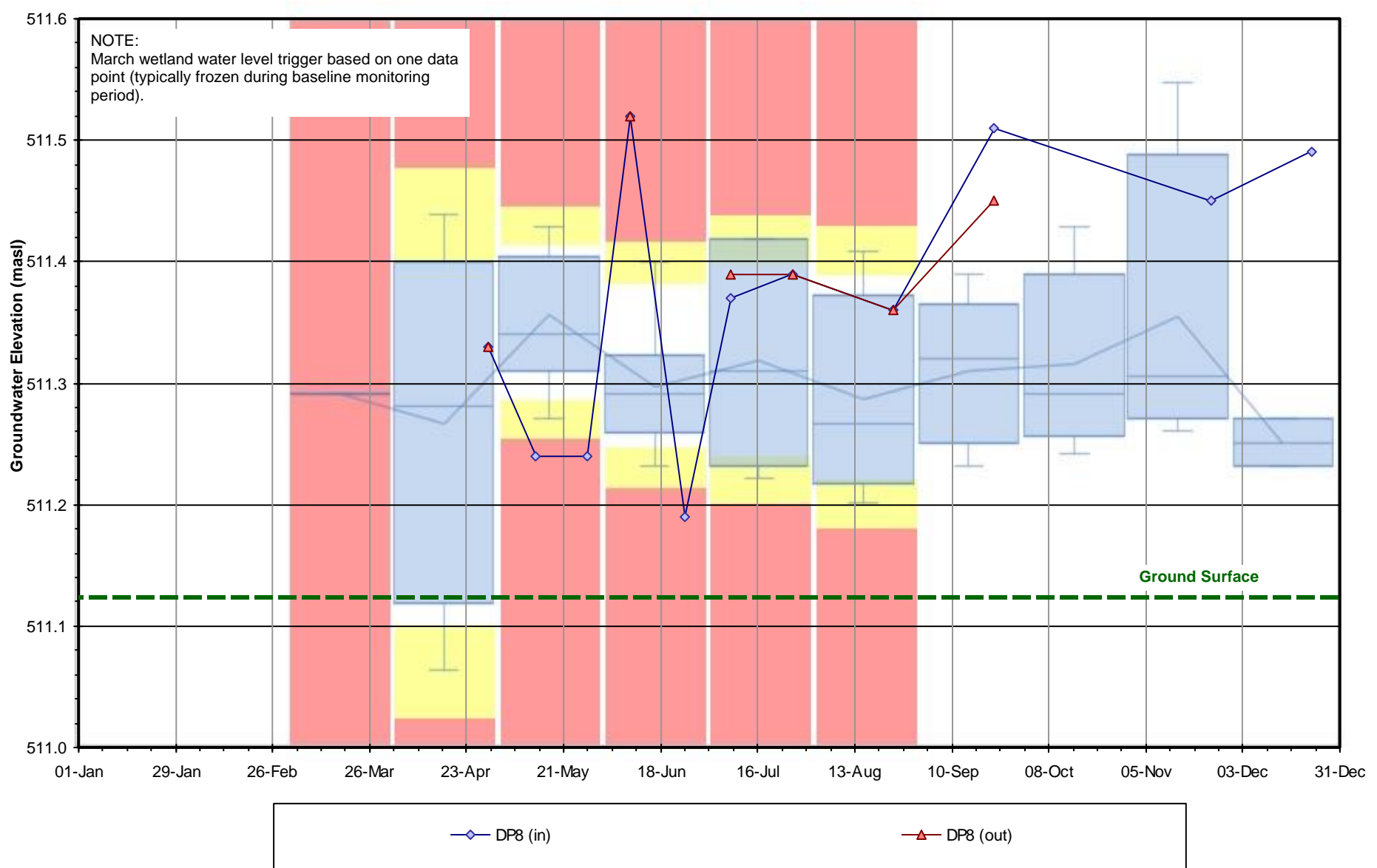
Figure F-22 2021 Groundwater / Surface Water PITM Results

DP7 - Rob Roy Swamp 2 Vernal Pool



**Figure F-23 2021 Groundwater / Surface Water PITM Results**

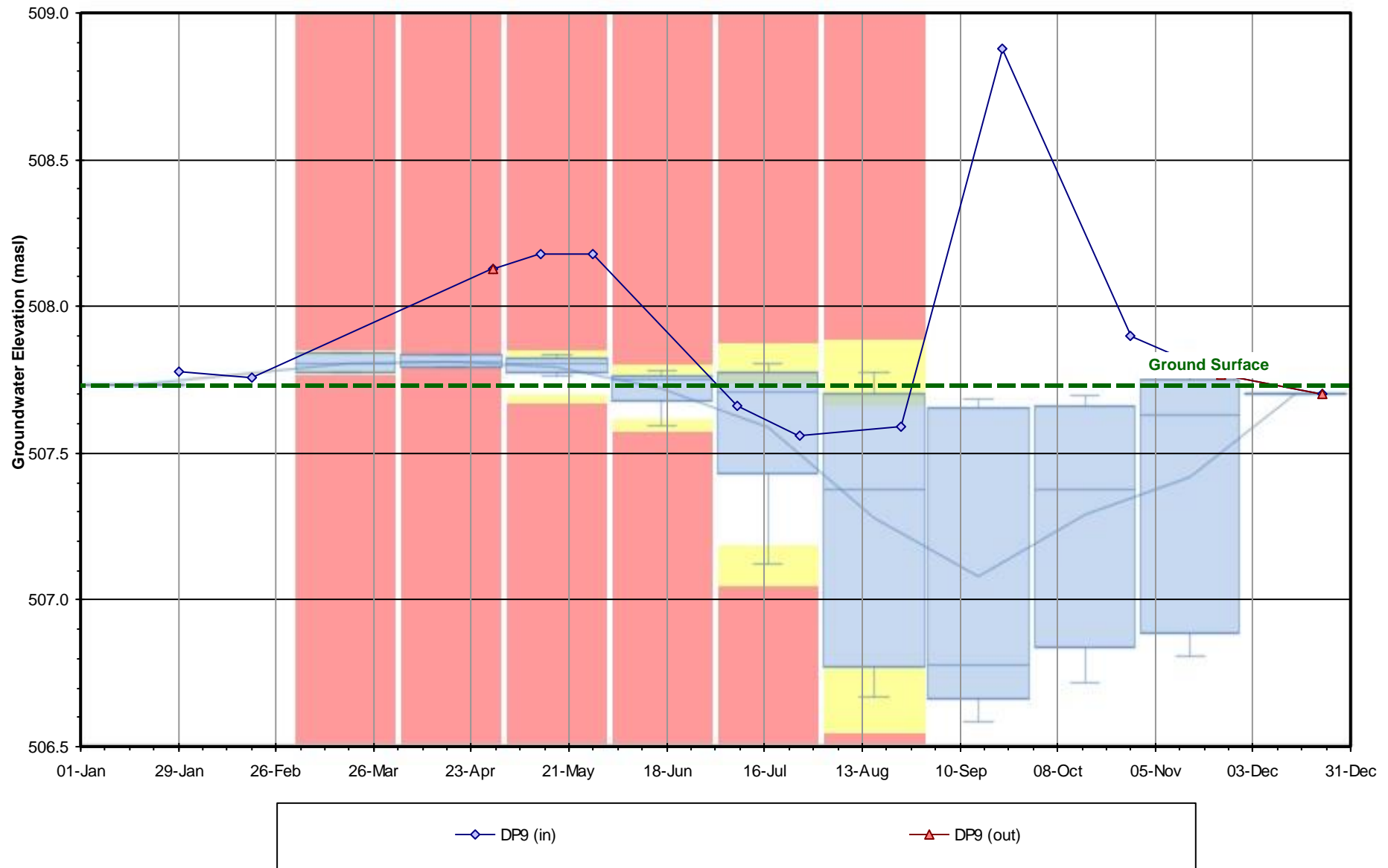
**DP8 - Rob Roy Swamp 6 Northwest Portion**





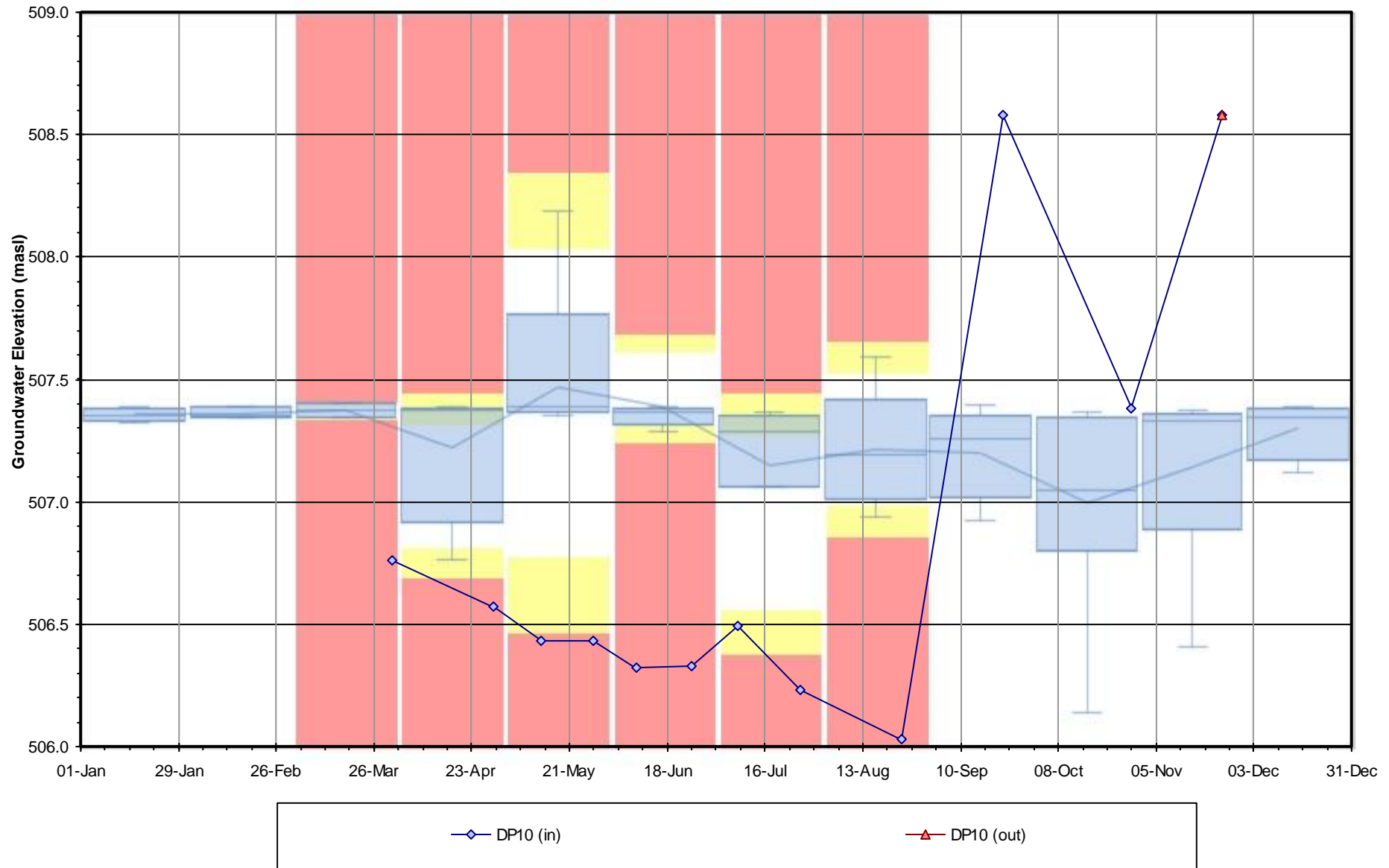
**Figure F-24 2021 Groundwater / Surface Water PITM Results**

**DP9 - ANSI Wetland B North Portion**



**Figure F-25 2021 Groundwater / Surface Water PITM Results**

**DP10 - Rob Roy Swamp 3**



**Figure F-26 2021 Groundwater / Surface Water PITM Results**

**Bridson DP - ANSI Wetland B South Portion**

